

A YEARNING DESIRE
VICTORIA BATEY



CITY DESIRE
CITY DESIRE
CITY DESIRE
CITY DESIRE
CITY DESIRE





GROWING UP RURAL

GROWING UP RURAL MEANS A LOT OF MANY THINGS, AND FOR THE PEOPLE RAISED UP BY IT, THEIR OPINIONS VARY.

IT MEANT YOU GOT LOOKED AFTER, BY NEIGHBORS, TEACHER, AND COACH. CHANCES ARE YOU HAD EXTENDED FAMILY THERE, AND YOU SPENT TIME WITH THEM THE MOST.

IT MEANT YOU COULDN'T GET AWAY WITH TRUANCY, BECAUSE CHATTER WOULD GET BACK TO YOUR PARENTS. IT MEANT TRIPS TO THE CITY WERE RARE BETWEEN, AND ALWAYS THE REASON WAS CRFANDS.

IT MEANT CLASS SIZES WERE SMALL, AND STUDENTS NOT THERE WERE MISSED. IT MEANT POSSIBLY SPREAD LIKE GRASS-FIRES, ESPECIALLY BY THOSE YOU KISSED.

IT MEANT BAND MEMBERS WEREN'T NEEDS, BUT SUPPORTED BY A HIGH STUDENT COUNT. YOUR SCHOOL HAD A DRESS CODE, WHERE RESPECT FOR SELF ABONND.

IT MEANT NO SWEARING IN PUBLIC, TOWN BYLAWS WITH CURFEWS. SPORTS TEAMS WERE A WAY OF LIFE, AND ROLLED THE LOCAL NEWS.

MANY

GIRLS

A

R

E

D R

E

A M

I N

G

ABOUT

LIVING

IN

THE

B

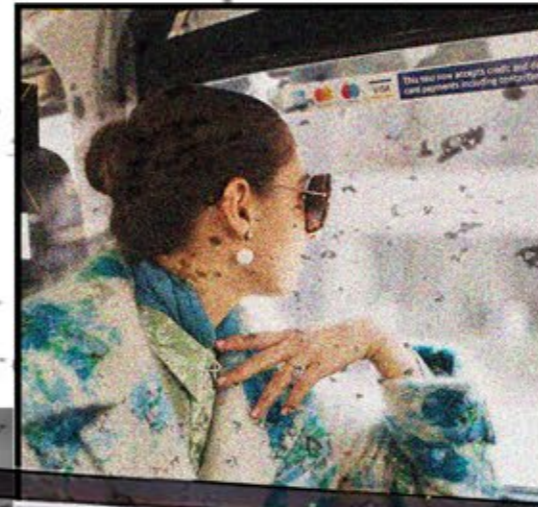
I

G

C

I T

Y



ALEXA CARDIGAN



CARLA BLOUSE



EMILY TEA DRESS



PIPPA TANK TOP



RUTH TOP



EBONY JACKET



HARRIET JACKET



SOPHIE POLO



SOPHIE POLO



RANGE PLAN - - TOPS

RANGE PLAN - - B O T T O M S

AMY SWEATPANTS



DARCEY JOGGERS



ADELAIDE TROUSERS



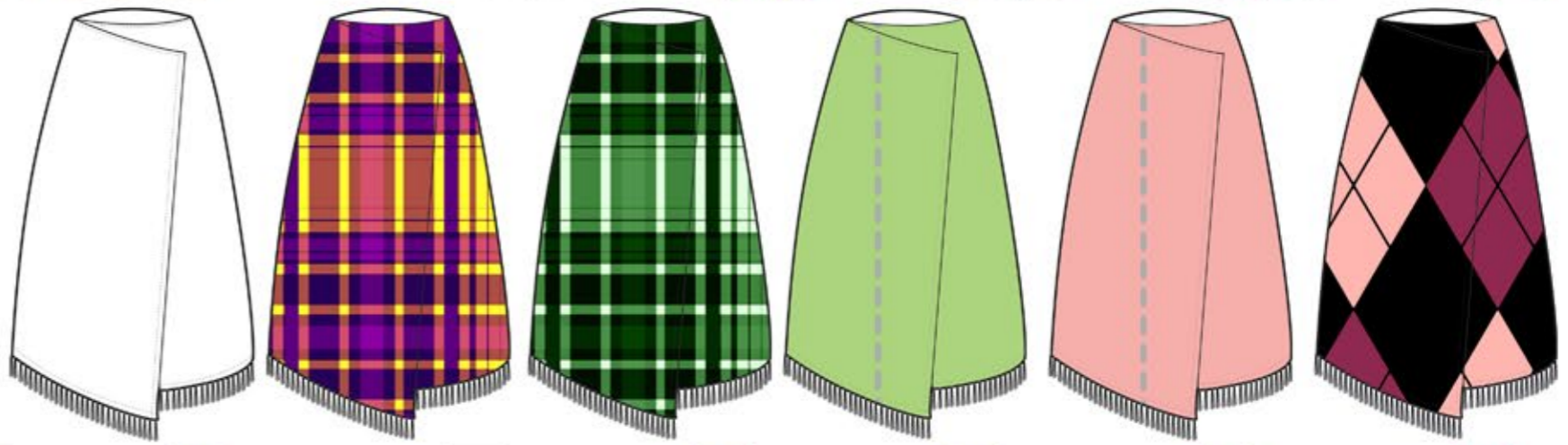
BERNIE SKIRT



FREYA SET



BENNETT SKIRT



CHLOE SUIT



INITIAL DESIGNS



RANGE PLANS



ONE

FOUR

TWO

FIVE

THREE

SIX

WARNING DESIRE



LOOK ONE - CHLOE SUIT



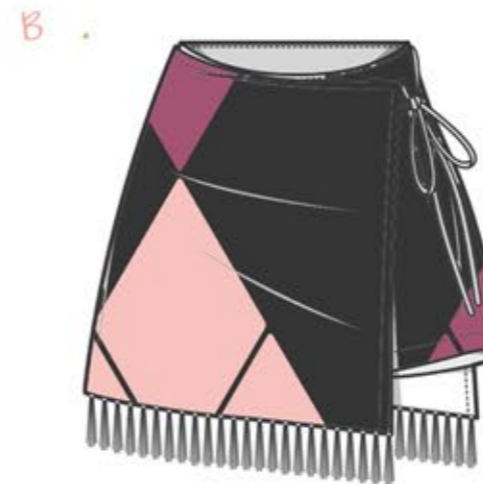
A. CHECK PRINT SMOKERS JACKET WITH TIE FASTENING AND POCKET. PAIRED WITH TAILORED WIDE LEG TROUSERS, WITH A CONCEALED ZIP. ALSO IN THE CHECK PRINT.



LOOK TWO - EBONY JACKET AND BERNIE SKIRT



A . PVC BIKER JACKET WITH WELT POCKETS AND ZIP FASTENING. JACKET IS FULLY LINED



B. TENCEL CHECK PRINT SKIRT, FINISHED WITH SOFT FEATHERY FRINGE AT THE HEM. WRAPPED WITH TIE FASTENING AND A-LINE.



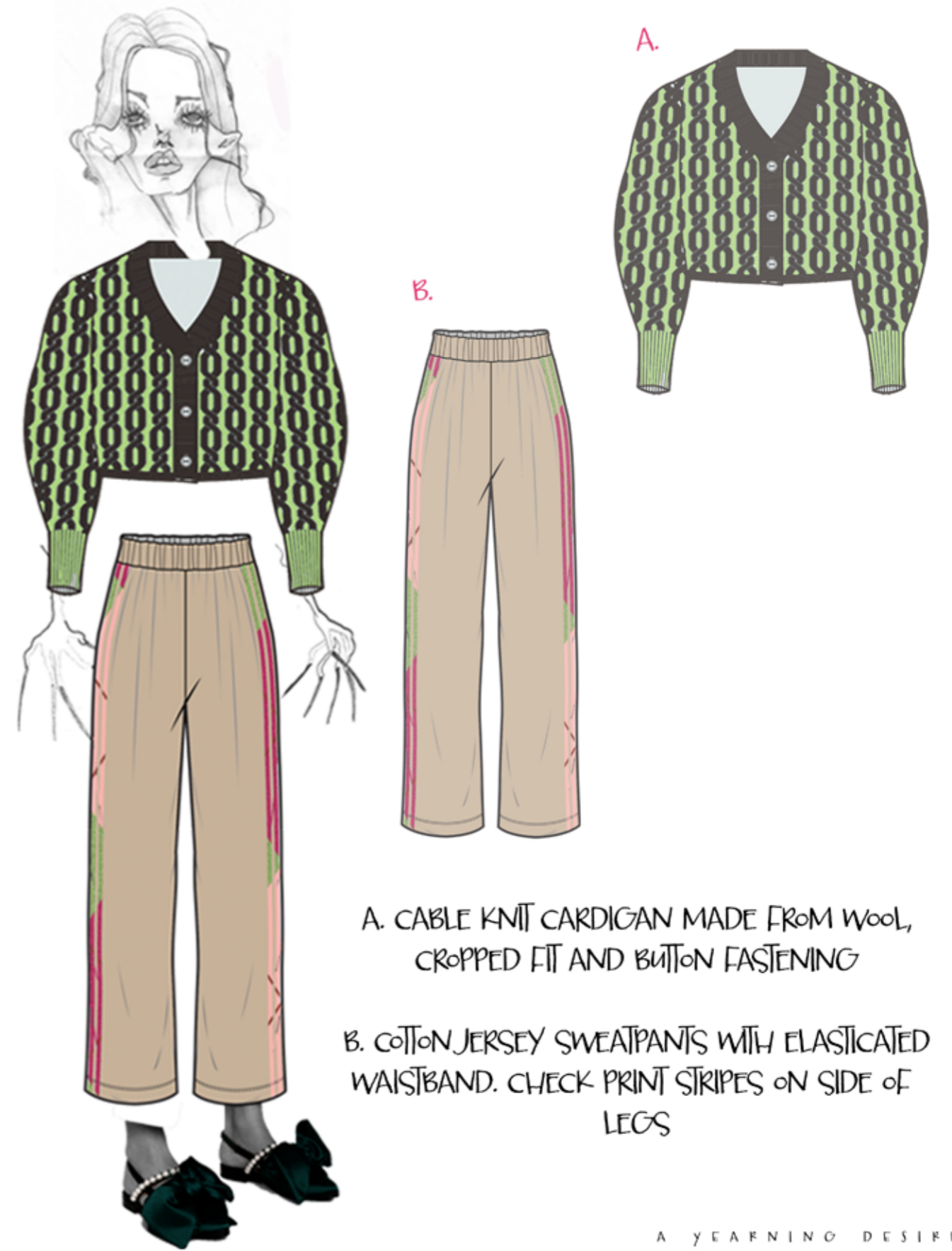
LOOK THREE - SOPHIE POLO AND ADELAIDE TROUSERS

A. COTTON JERSEY RUGBY POLO, WITH COW PRINT BODY AND BEIGE FEATURES

B. PLAIN BLACK POLYESTER SATIN WIDE LEG TROUSERS WITH BUTTON AND FLY FASTENING. FRONT TROUSER LEGS HAVE PLEATS AS WELL AS SIDE POCKETS



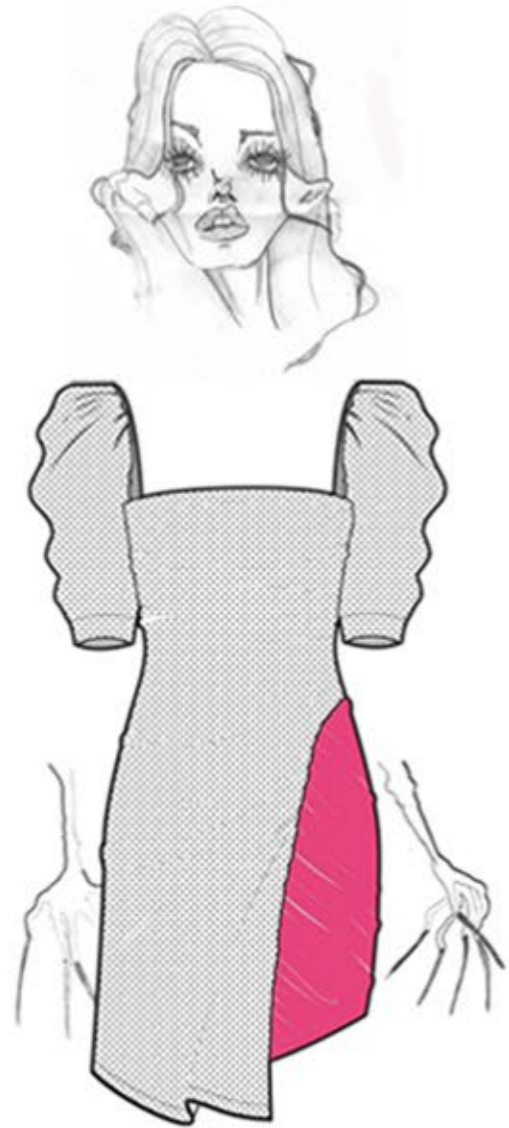
LOOK FOUR - ALEXA CARDIGAN AND AMY SWEATPANTS



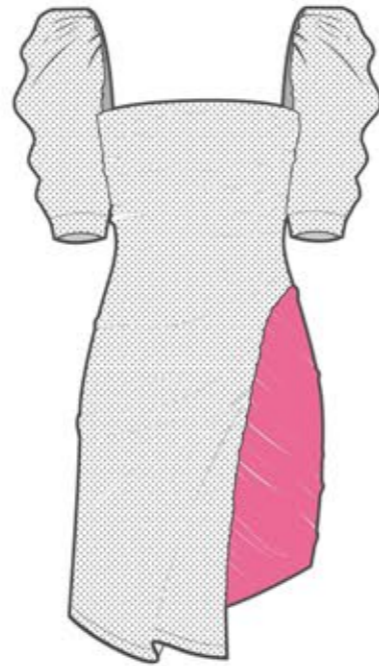
A. CABLE KNIIT CARDIGAN MADE FROM WOOL, CROPPED FIT AND BUTTON FASTENING

B. COTTON JERSEY SWEATPANTS WITH ELASTICATED WAISTBAND. CHECK PRINT STRIPES ON SIDE OF LEGS

LOOK FIVE - EMILY TEA DRESS



A.



A. POLKA DOT TENCEL DRESS, WITH MILKMAID NECKLINE. PINK RUCHED INSERT AND ASYMMETRIC HEMLINE



LOOK SIX - HARRIET JACKET AND ERIN FLARES



A.



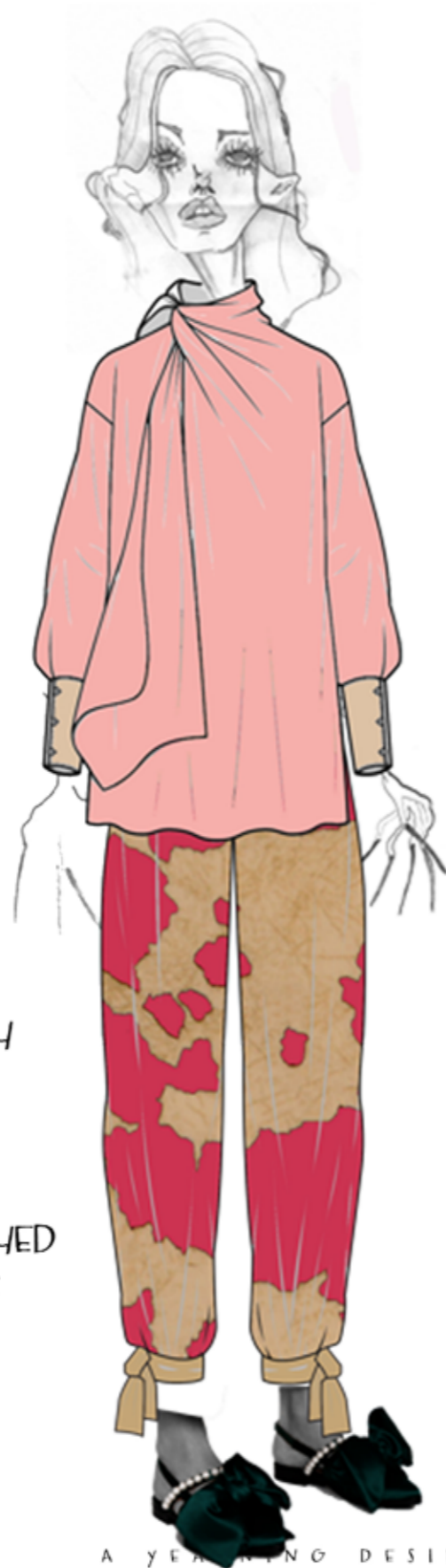
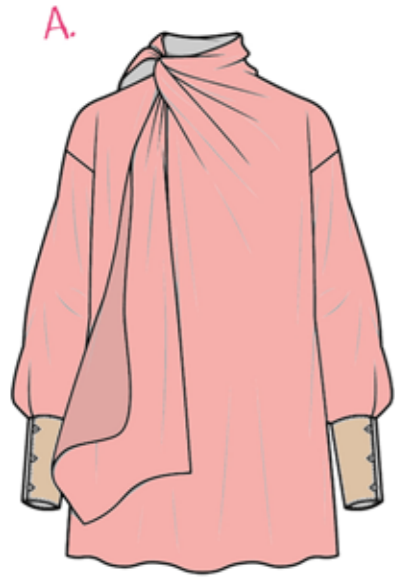
B.



A. TAILORED JACKET WITH JET POCKETS AND BELT TIE. MADE FROM COTTON POLYESTER, FULLY LINED.

B. PRINTED FLARES, WITH BAR AND TACK FASTENING. SIDE POCKETS AND A SPLIT HEM

LOOK SEVEN - CARLA BLOUSE AND DARCEY JOGGERS



A. LONG SLEEVE BLOUSE IN HEAVY CREPE, WITH
LONG SLEEVES DRAPED INTO A FITTED CUFF.
WEAR THE NECK TIE AS A BOW OR LOOSE

B. TAPEDED AT THE ANKLE JOGGERS AND FINISHED
WITH A BOW TIE, THE JOGEGERS ARE MADE
FROM COTTON POLYESTER WITH COW PRINT