

# || ANNA TAYLOR      PORTFOLIO ||

|| BA FASHION DESIGN      GRADUATION PROJECT ||

# FALS IDENTITY

LOCKDOWN PROVIDED MANY OPPORTUNITIES, NAMELY MORE TIME AND GREATER EXPOSURE TO SOCIAL MEDIA. DURING THIS TIME, I BECAME ACUTELY AWARE OF HOW MANY PEOPLE WERE OPENLY DISPLAYING THEIR BODIES, BUT MORE ASTOUNDINGLY HOW MANY HAD AUGMENTED THEM, IN PARTICULAR YOUNG WOMEN. INTRIGUED, I DECIDED TO FURTHER EXPLORE AND RESEARCH WHY YOUNG WOMEN APPEAR TO BE SO SCARED TO BE UNIQUE AND OF GROWING OLD, DESIRING TO IMPLANT CHEMICALS AND SILICONE INTO THEIR UNIQUE ORGANIC FORM, TO CONFORM TO WHAT MEDIA AND INFLUENCER'S DICTATE IS BEAUTIFUL. FALSELY CREATING SOCIAL STANDARDS IN PERCEIVED BEAUTY AND FURTHERING THE OBSESSION OF SOCIETY TO BE PERFECT. COSMETIC SURGERY PROCEDURES HISTORICALLY, WERE EMPLOYED TO REPAIR GENUINE DISFIGUREMENT. OVER TIME THESE PROCEDURES HAVE BEEN MODERNISED, DEVELOPED AND MANIPULATED TO AUGMENT CHANGE AND ARE EVEN AVAILABLE ON THE HIGH STREET, READILY PROVIDING THE OPPORTUNITY TO CONFORM AND REPAIR SOCIETY'S PERCEIVED IMPERFECTIONS.





In Flanders Fields

In Flanders fields the poppies blow  
Between the crosses, row on row,  
That mark our place: and in the sky  
The larks, still bravely singing,  
Scarce heard.

We are the  
We lived, for  
Loved, and  
In

Take up on  
To you for

The torch; be yours to hold  
If ye break faith with  
We shall not sleep. Then

In Flanders fields

Punch  
Dec 8. 1915

John McCreary

**THEN**

**VS**

## NOW

COSMETIC SURGERY  
PROCEDURES HISTORICALLY  
WERE EMPLOYED TO REPAIR  
GENUINE DISFIGUREMENT  
OVER TIME THESE  
PROCEDURES HAVE BEEN  
MODERNISED, DEVELOPED  
AND MANIPULATED TO  
AUGMENT CHANGE AND ARE  
EVEN AVAILABLE ON THE  
HIGH STREET, READILY  
PROVIDING THE  
OPPORTUNITY TO CONFORM  
AND REPAIR SOCIETY'S  
P E R C E I V E D

'IMPERFECTIONS'.

A collage featuring a close-up of a person's face, a purple balloon, and the text "MASKING youth is desired". The text is written in a stylized, handwritten font, with "MASKING" in all caps and "youth is desired" in lowercase. The background is a mix of colors and textures, including a purple balloon and a close-up of a person's face.

I really have been the unluckiest person on the planet  
as far as fiscal comments are concerned.  
This whole economic procedure thing has been so  
disastrous.

- repeated checks - April 2021







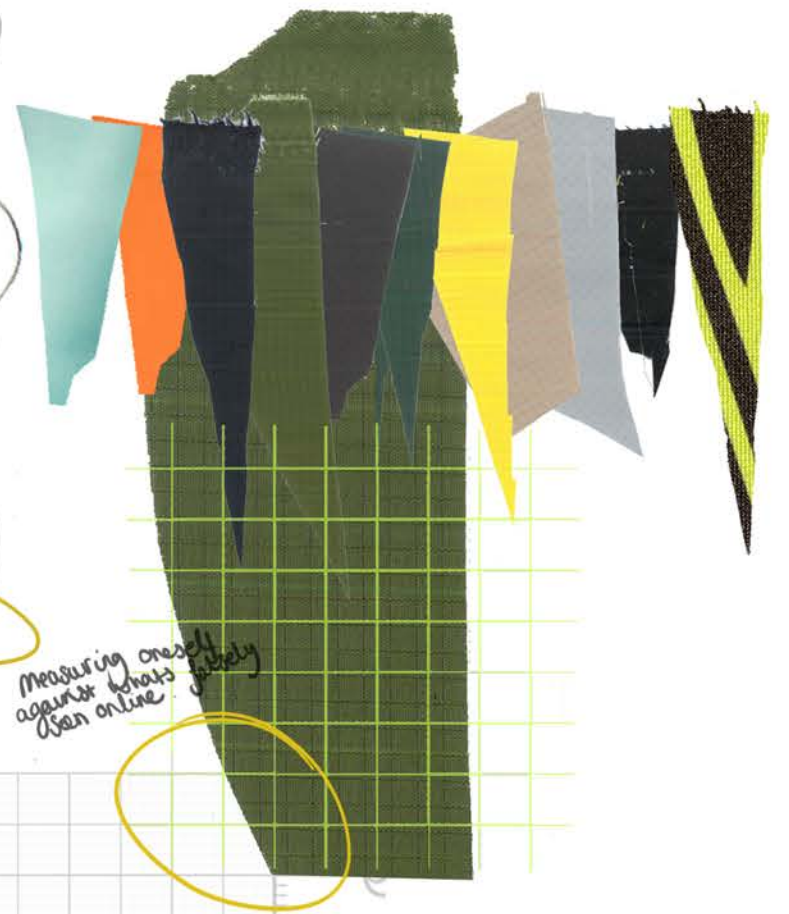




FALSELY CREATED  
SOCIAL STANDARDS  
IN PERCEIVED  
BEAUTY AND  
FURTHERING THE  
OBSESSION OF  
SOCIETY TO BE  
P E R F E C T .







youth is  
of a size



WHY DO YOUNG WOMEN APPEAR TO BE SO SCARED TO BE UNIQUE AND OF GROWING OLD, DESIRING TO IMPLANT CHEMICALS AND SILICONE INTO THEIR UNIQUE ORGANIC FORM, TO CONFORM TO WHAT MEDIA AND INFLUENCERS DICTATE IS BEAUTIFUL. FALSELY CREATING SOCIAL STANDARDS IN PERCEIVED BEAUTY AND FURTHERING THE OBSESSION OF SOCIETY TO BE PERFECT.







# LINE UP.

/// FASLE IDENTITY ///

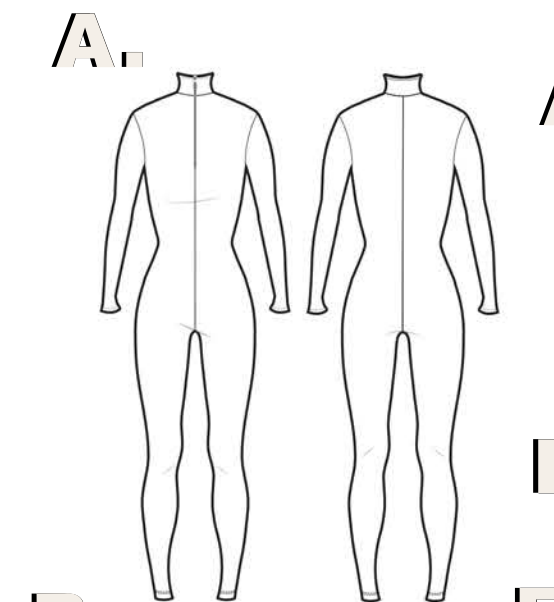




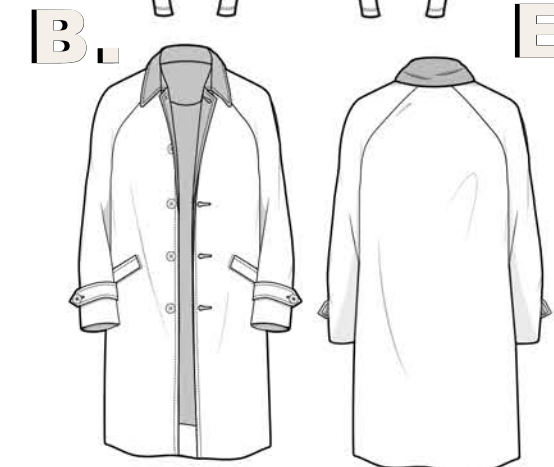




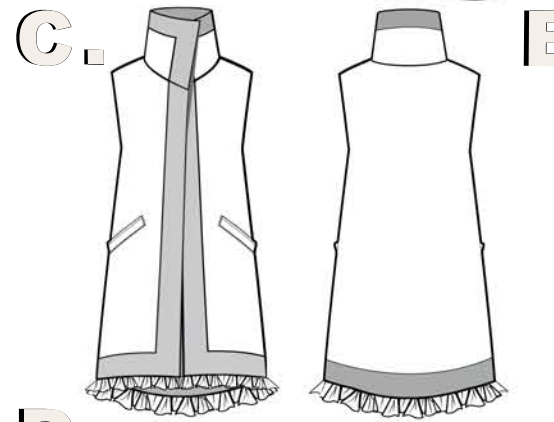
LOOK ONE - COVER IT UP



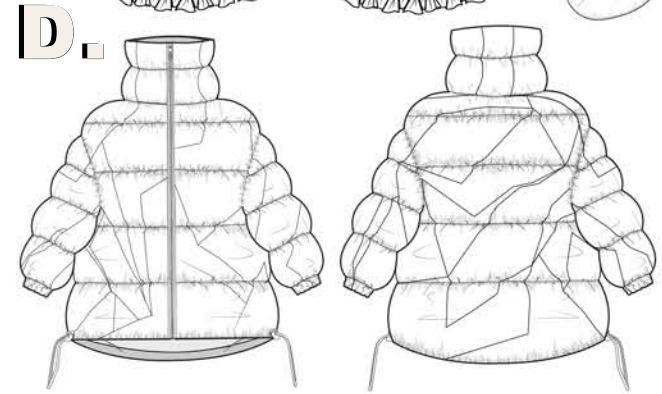
A. BASIC FULL LENGHT CATSUIT WITH OWN DESIGN.



B. NON FITTED OVERCOAT WITH SCREEN PRINTED CONTRAST CHECK COLLAR.

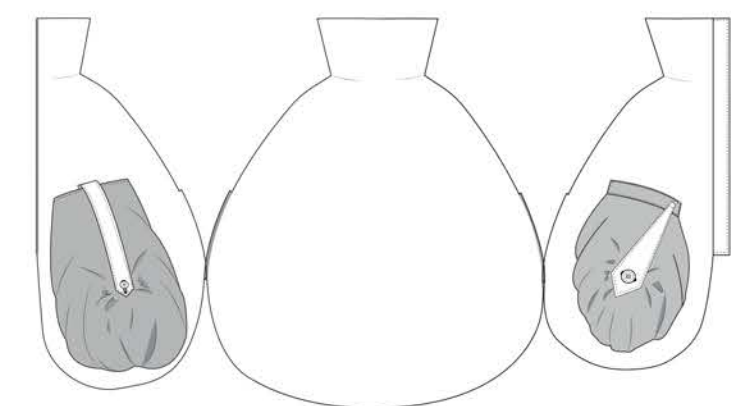
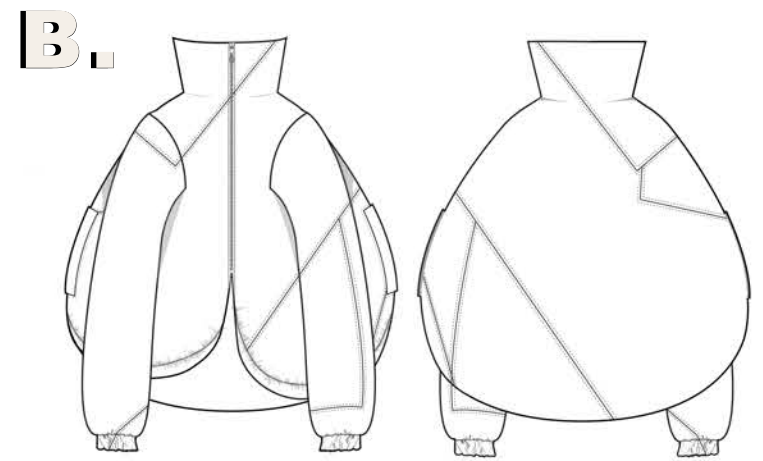
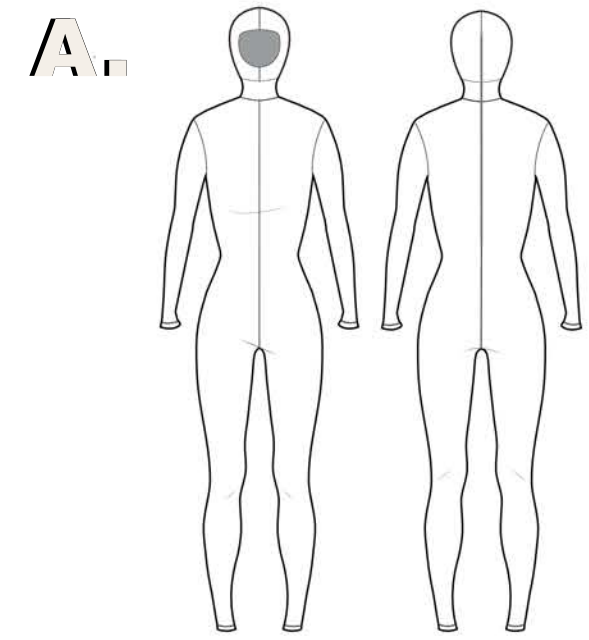
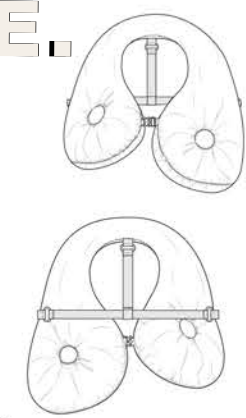


C. LONG GILET WITH OVERSIZED COLLAR CONTRAST FRAMEAND RUFFLED BOTTOM DETAIL AND WELT POCKETS.



D. PATCHWORK DOWN PUFFER JACKET WITH CENTER FRONT ZIP AND OVERSIZED COLLAR.

E. ASYMETRIC BOOB SCARF WITH COVERED BUTTONS AND LIFE JACKET STYLE WAIST STRAP.



A. FULL CENTER FRONT GIMPSUIT WITH CENTER BACK ZIPPER, UNIQUE PRINTED LYCRA AND PRINTED AND BREATHABLE POWER MESH MESH TO COVER THE FACE.

B. OVERSIZED PATCH WORK QUILTED COAT WITH CENTER FRONT ZIPPER, OVERSIZED COLLAR AND BIG BOOB LIKE ODD POCKETS.

LOOK TWO - WHAT'S UNDERNEATH



# LOOK FOUR - NIP AND TUCK

FULL CENTER FRONT CATSUIT WITH 3/4 ZIP  
PRINTED AND BREATHABLE MESH TO COVER  
FACE.

B. OVERSIZED PATCH WORK QUILTED PUFFER  
WITH DETACHABLE SLEEVE, OVER SIZED  
COLLAR AND BIG BOOB LIKE ODD POCKETS.

C. OVERSIZED QUILTED SCARF THAT FALL TO  
THE FLOOR THAT HAS POPPERS FOR  
FASTENING. COVERED BOTTOM DETAIL

A.

B.

A.

B.

C.

A.

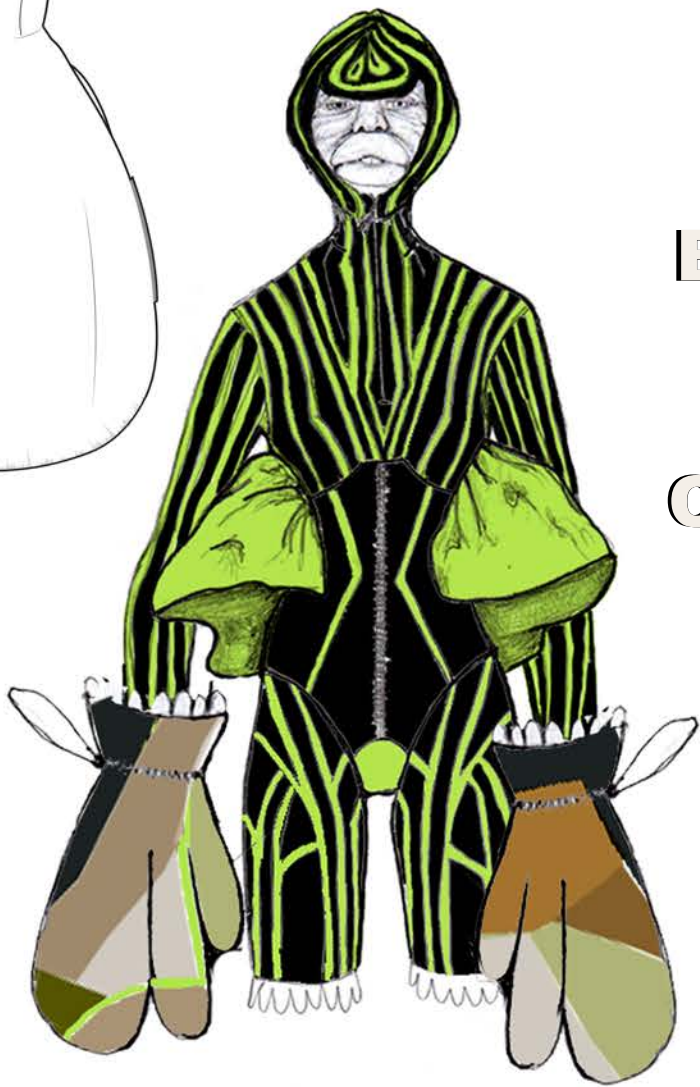
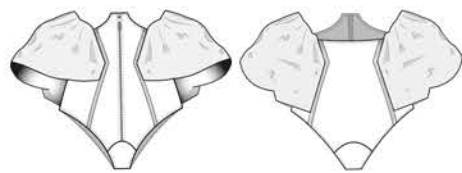
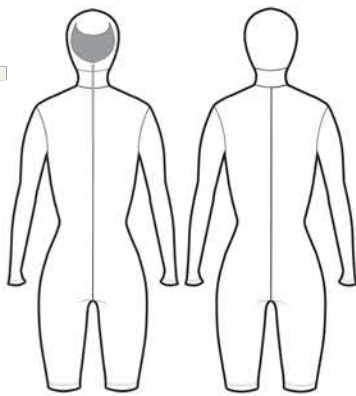
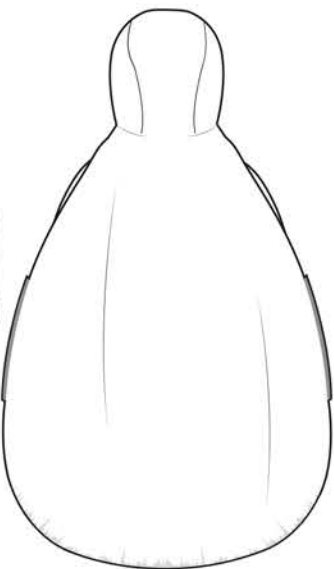
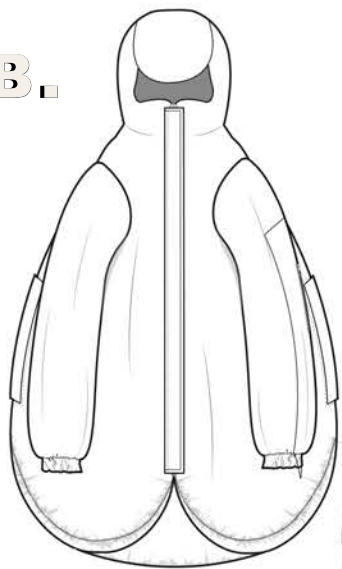
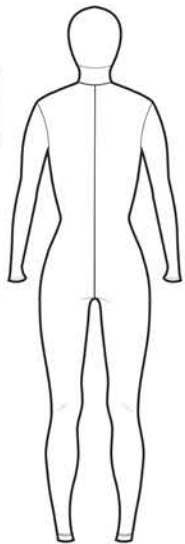
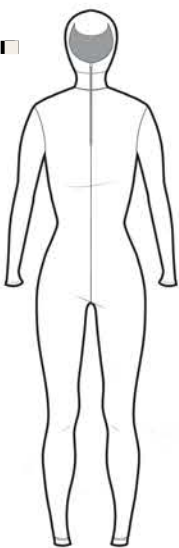
B.

C.

HOODED CATSUIT WITH LONG  
SLEEVES AND SHORTS. CENTER  
FRONT 3/4 ZIP.

CORSET WITH CENTER FRONT EXPOSED  
ZIP, EXHAGGERATED SIDE PANNLES  
AND PRINT DETAILING.

OVER SIZED PATCHWORK QUILTED  
MITTONS WITH FINGER FINGER AND  
THUMB DETAILING.



# LOOK THREE - THE BIGGER THE BETTER



