



*E*MMA

*S*AW

AW21

BICYCLES WERE

UBIQUITOUS

This project is delving into 1950's, looking at pastimes, the art that surrounded the period - *oh and fishing.*

Bicycles were ubiquitous in the 1950s and when we look at historic pictures there is always a bicycle in the taken image.

However I am **not** presenting a pleased pursuit of wistfully riding down the country lane.

The 50's were more than that, it was a hot bed for the new, the **patriarch** of modernity, the 50's offered a new life that was pushing boundaries, rebellion through clothing and fabrication. Apparel which we take for granted, and have become a staple for the working man in his every day!

No bicycles were harmed in the creation of this work

Bicycles were
UBIQUITOUS

EMMA SAW
AW21

square

(1) Unexciting,
unadventurous,
mainstream or dull.

Generally used in
describing a person
with such attributes
or who plays it
safe. Historically,
derived from a
person whose goal in
life is to have
three "squares" a
day, a roof over his
head, a respectable
job, a house, 2.5
kids, etc.

a n g u l a r

Picasso, "Still Life with Chair Caning", 1912

Fishing hook
Google images

Fishing shop interior
Google images

Old fisherman
Google images

Boy fishing with net
Google images

EMMA SAW
AW21

Bicycles were
UBIQUITOUS



1. (n; adj) A person who is regarded as dull, rigidly conventional, and out of touch with current trends.

Bicycles were
UBIQUITOUS

EMMA SAW
AW21

ALICIA OSTRIKER

FISHERMAN

Imagine a fisherman in summer deep
Enough to have drowned all other seasons—

His river flows between banks of ash and hickory,
Blackberries ripen, cobwebs form in the shrubs,

Bluejays grow drowsy. Living in his dream,
Having escaped his relatives, a fisherman—

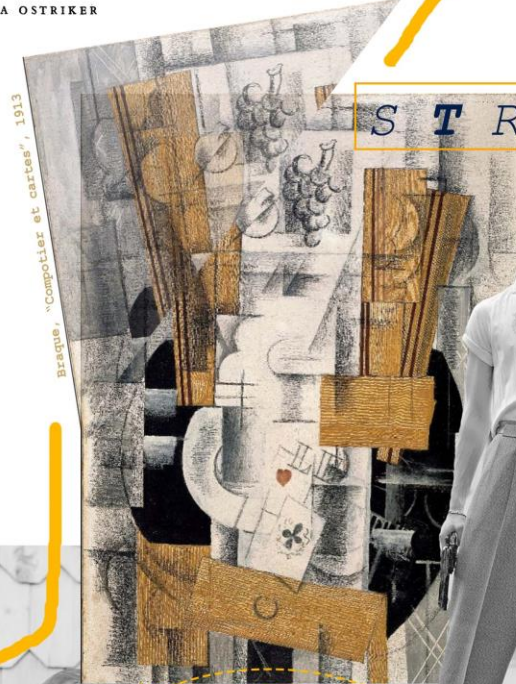
All above water is gauze, hotly in touch, dry light,
A late Monet, a Bach

Chorale, a woman peeling oranges—
Only the cold trout must elude the dream.

Below his boat in the brown flood, pure muscle,
They glide along as if he does not exist,

Like courteous phrases in a dead language.
Their glassy eyes look past each other, hopeless.

It is the way the fisherman wishes. He casts
His line again and again in the heavy heat.



Braque, "Compotier et cartes", 1913

S T R U C T U R E D



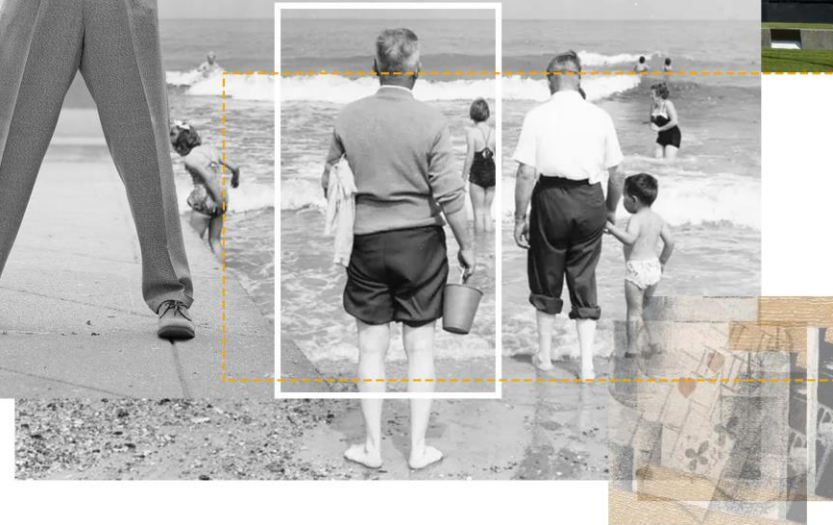
Cubist architecture
heatspaceandlight.com



197

Old English fisherman
Google images

what
belongs
where?



1950's men in the sea
Google images

EMMA SAW
AW21

Bicycles were
UBIQUITOUS

"it looks flat, but
it really isn't"



Southeast Asian fishermen
Google images



Polperro harbour bay, 150s
Google images



fisherman
Google images



Lifebuoy
Google images

Candlestick and Playing Cards on a Table", 1910
metmuseum.org

cubism

an early 20th-century style and movement in art, especially painting, in which perspective with a single viewpoint was abandoned and use was made of simple geometric shapes, interlocking planes, and, later, collage.

Bicycles were
UBIQUITOUS

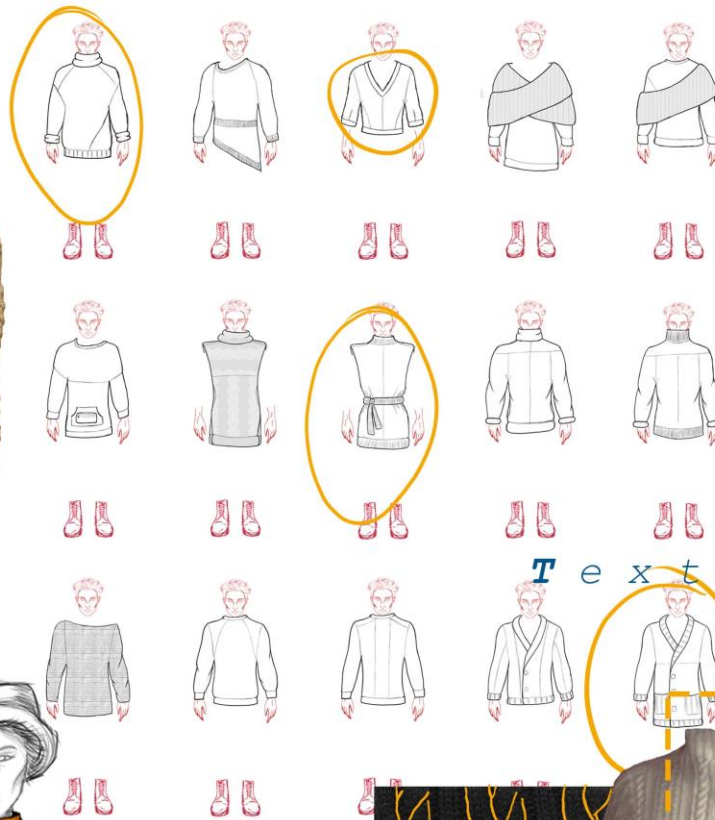
EMMA SAW
AW21

B
A
M
B
O
O
B
A
S
K
E
T
W
E
A
V
E

CLASSIC ARGYLE



RELAXED CABLE KNIT



knitwear

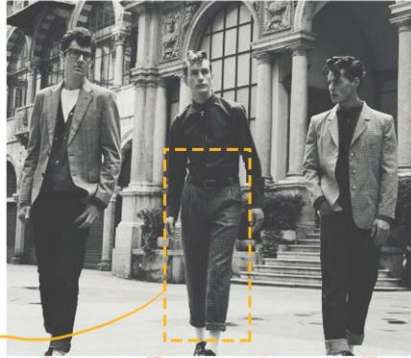
Texture



Chunky
cable



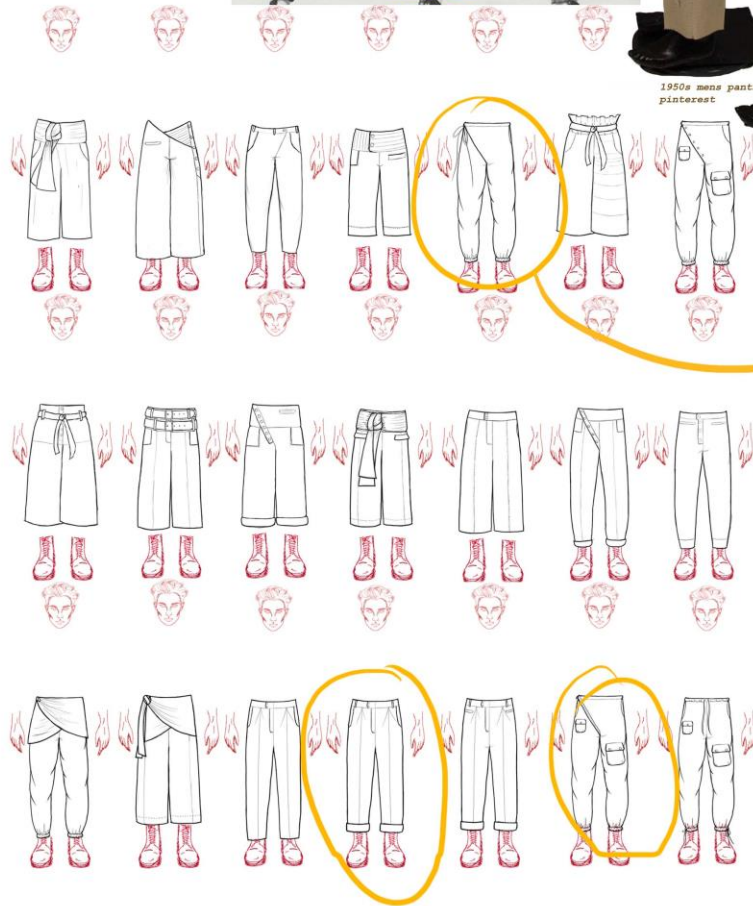
EMMA SAW
AW21



1950s mens pants
pinterest



Bicycles were
UBIQUITOUS

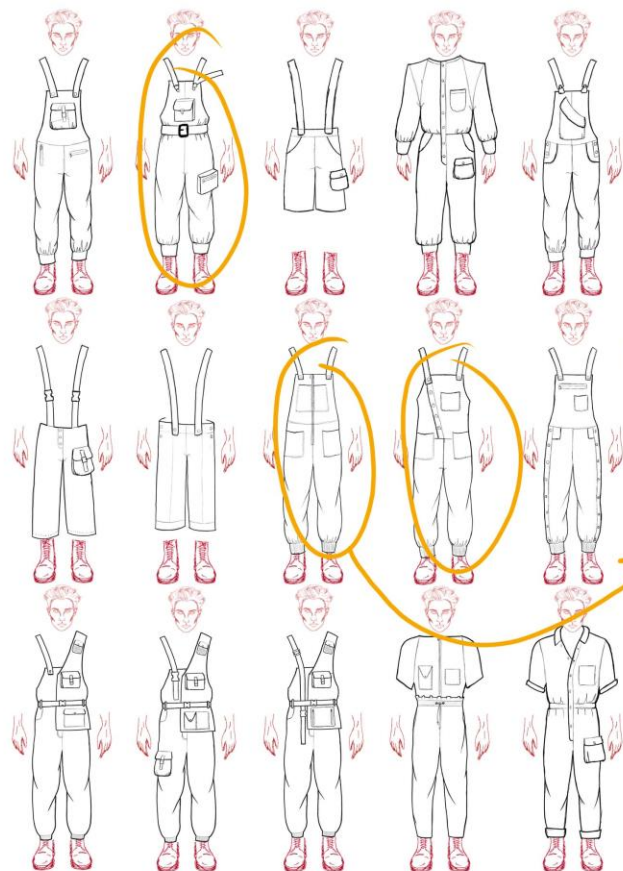


s
a
m
p
l
e

p
r
o
c
e
s
s

Bicycles were
UBIQUITOUS

EMMA SAW
AW21



black colours

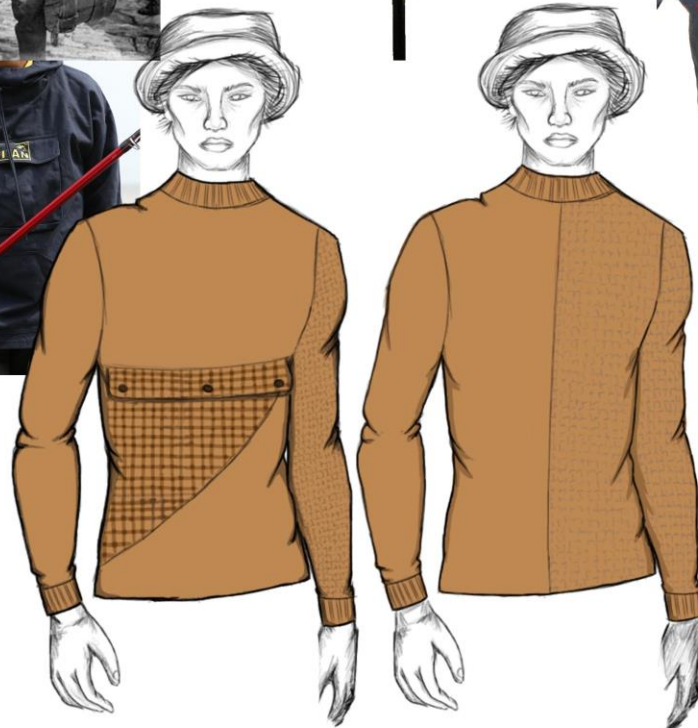
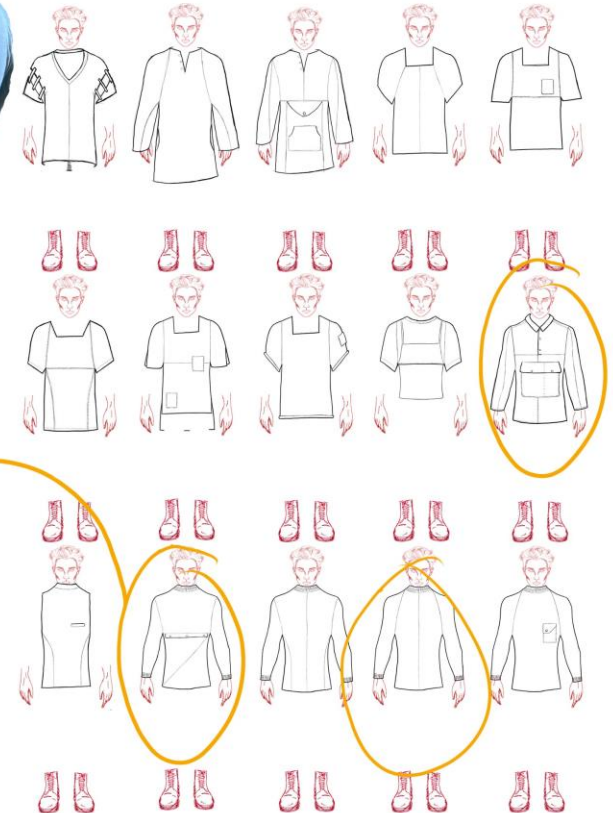
EMMA SAW
AW21

Bicycles were
UBIQUITOUS

high neck



mixed textures

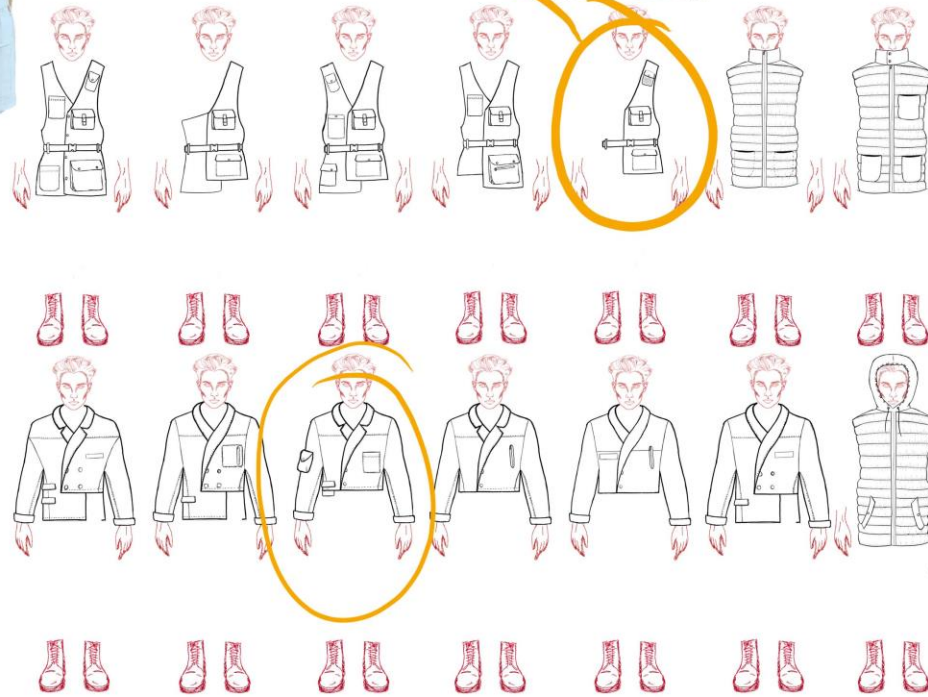
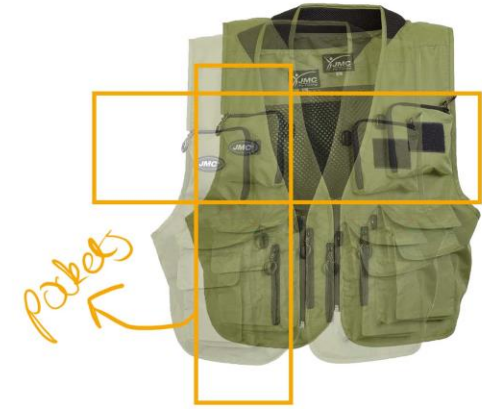


Bicycles were
UBIQUITOUS

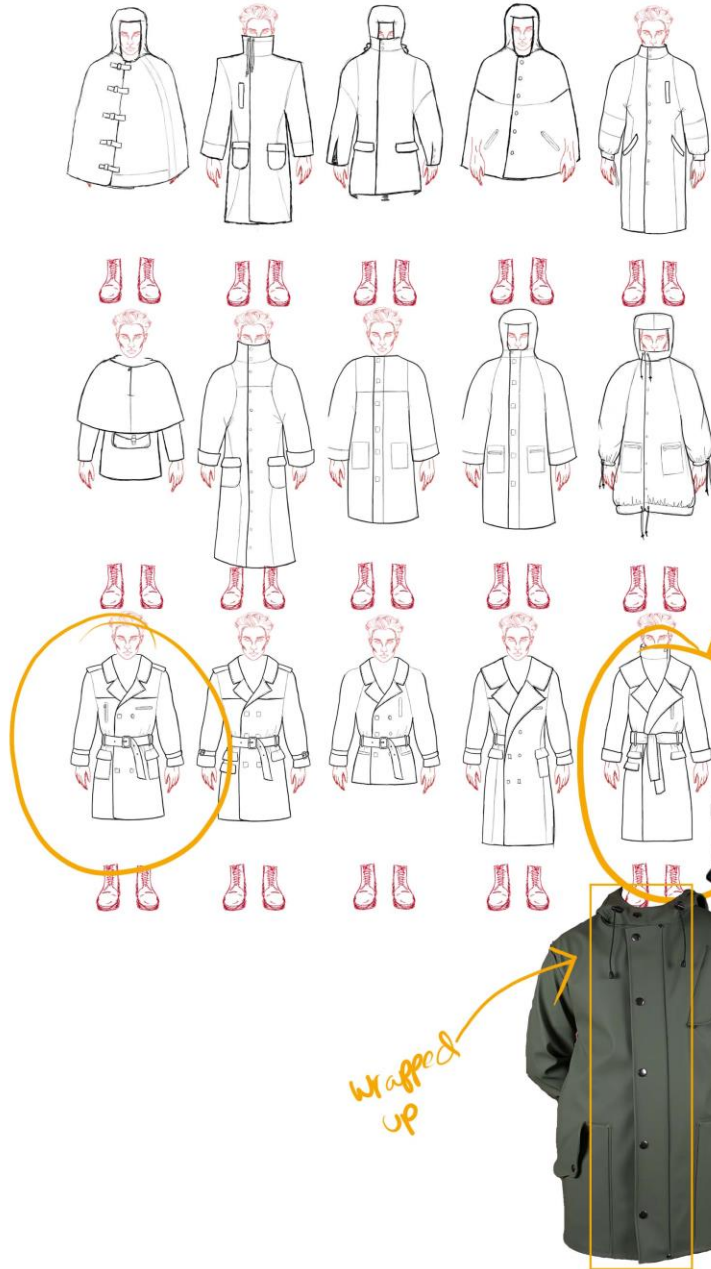
EMMA SAW
AW21



sample
process



EMMA SAW
AW21



Bicycles were
UBIQUITOUS



Bicycles were
UBIQUITOUS



EMMA SAW
AW21

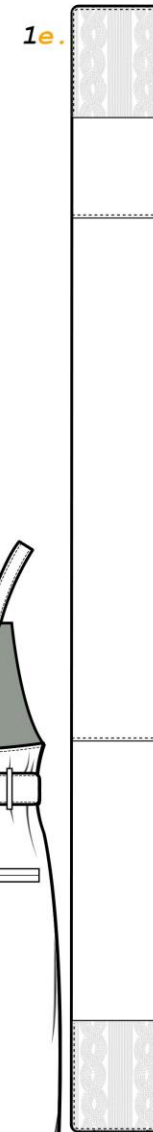
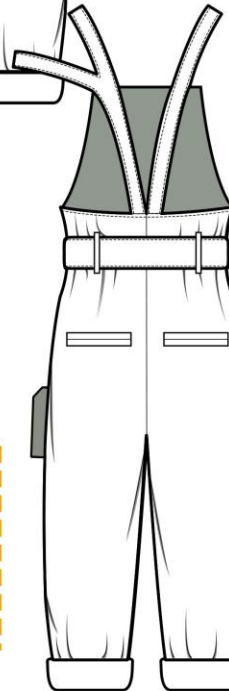
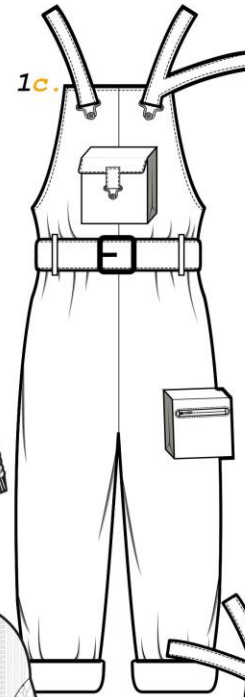
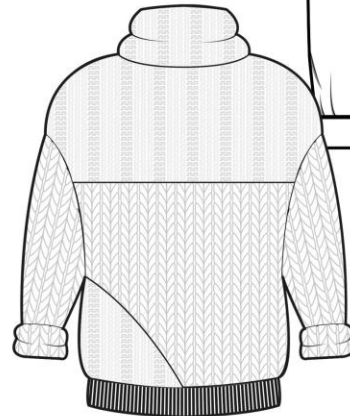
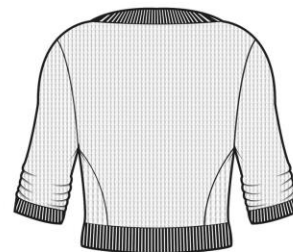
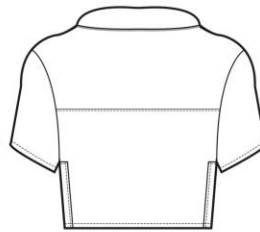
EMMA SAW
AW21



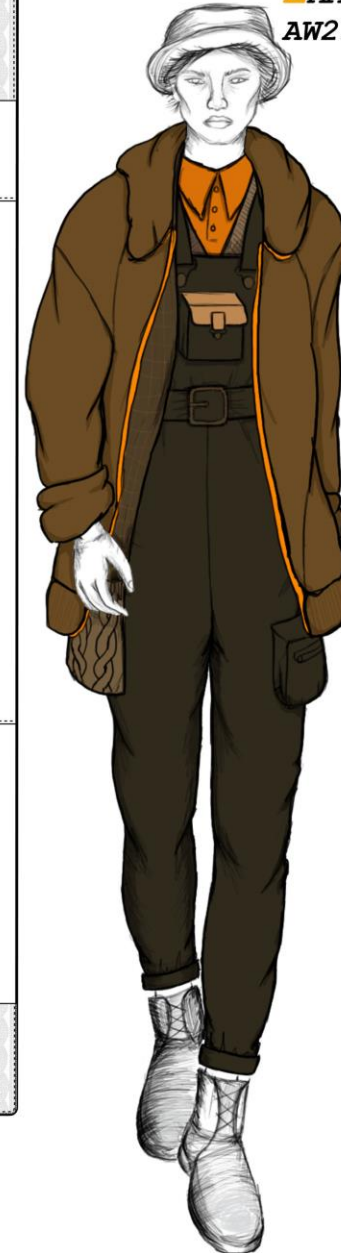
Bicycles were
UBIQUITOUS

Bicycles were
UBIQUITOUS

L O
O N
O E
K

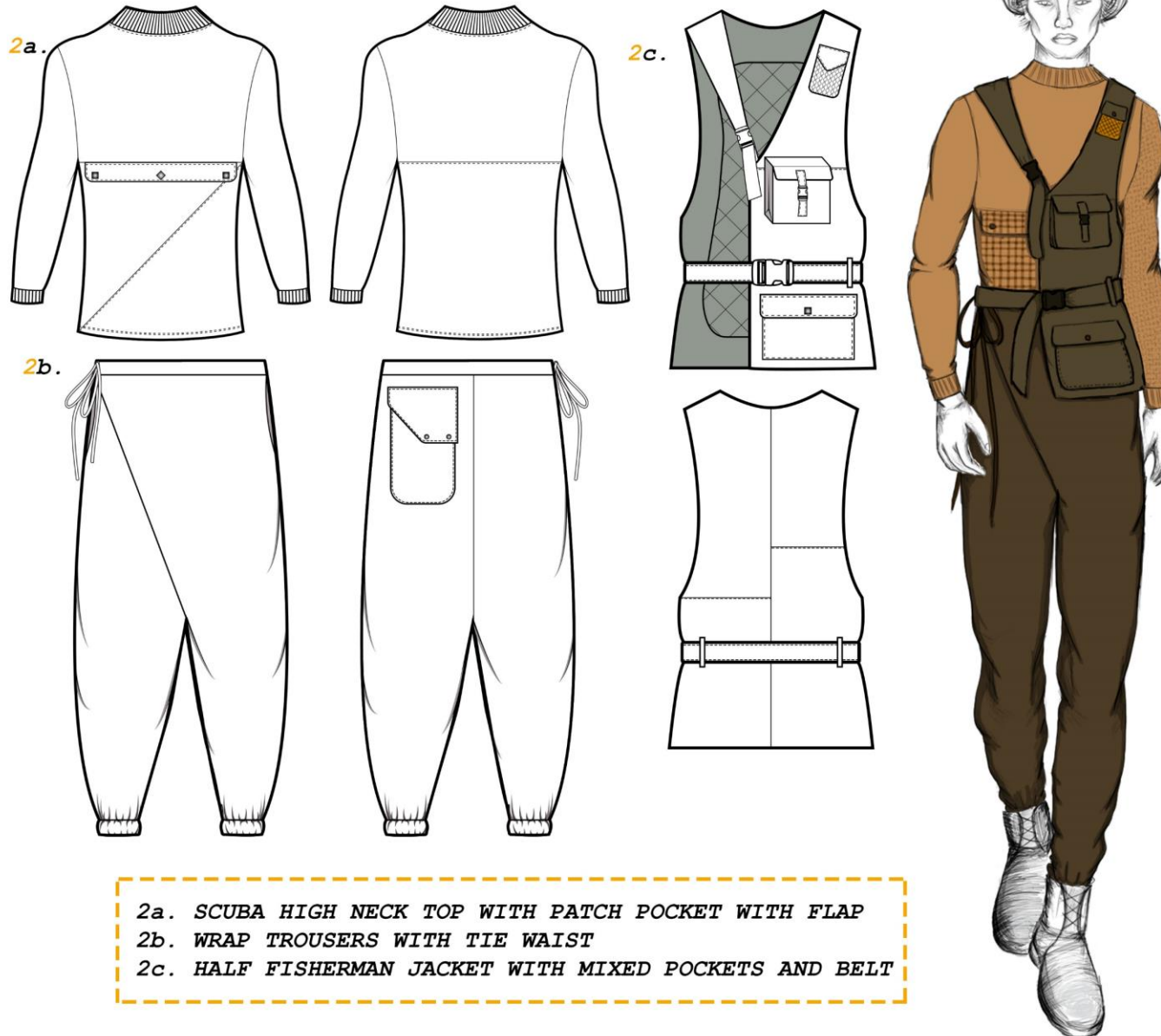


EMMA SAW
AW21



- 1a. CROPPED POLO SHIRT WITH PEAKED COLLAR
- 1b. CROPPED DEEP V LIGHTWEIGHT KNIT JUPMER WITH RUCHED SLEEVES
- 1c. TRIPLE STRAP DUNGAREES WITH BELLOW POCKETS
- 1d. OVERSIZED MIXED KNIT CARDIGAN WITH SLASH POCKETS
- 1e. MIXED TEXTURE SCARF WITH KNIT POCKETS

EMMA SAW
AW21



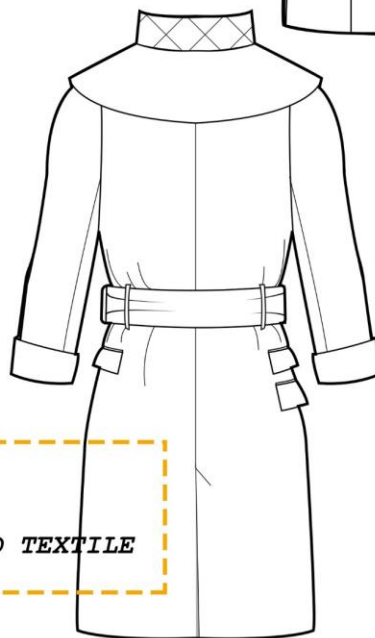
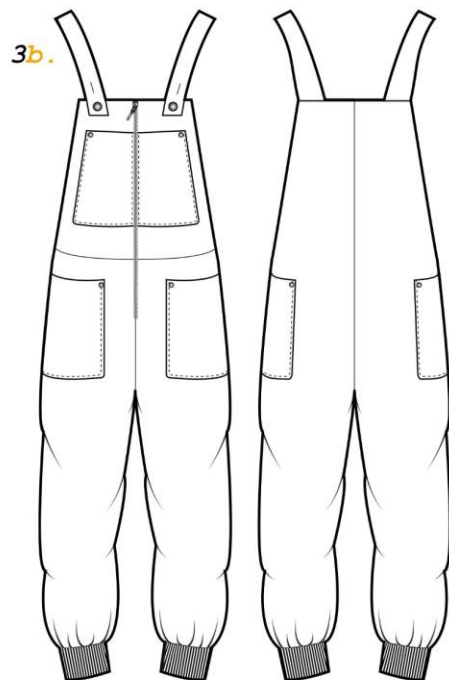
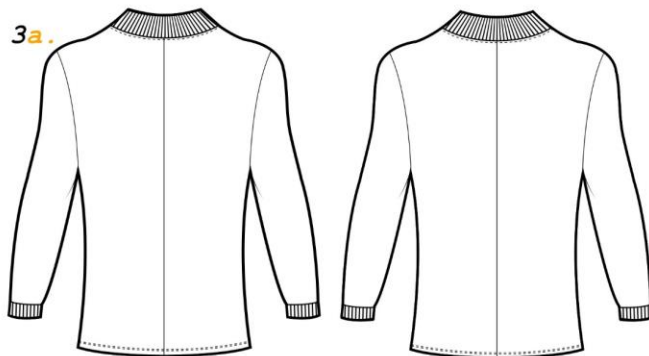
Bicycles were
UBIQUITOUS

L
O
O
K

T
W
O

Bicycles were
UBIQUITOUS

L T
O H
O R
K E
E



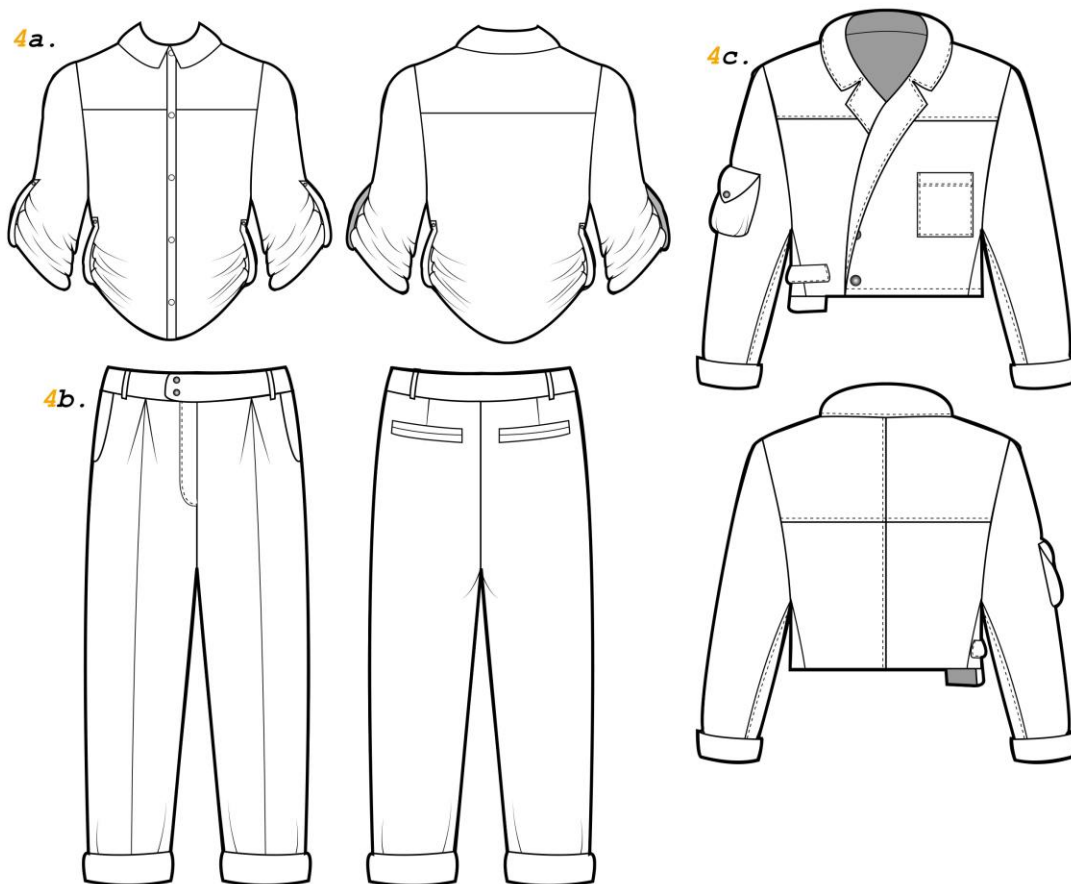
3a. SCUBA KNIT TOP
3b. ZIP UP DUNGAREES WITH PATCH POCKETS
3c. DOUBLE LAYER WIDE LAPEL TRENCH COAT IN MIXED TEXTILE

EMMA SAW
AW21



EMMA SAW
AW21

- 4a. MIXED PRINT POPLIN SHIRT WITH RUCH DETAILS
4b. STRAIGHT LEG TURNED UP TROUSERS WITH PLEAT
4c. CROPPED DENIM JACKET WITH TOP STITCH DETAIL



Bicycles were
UBIQUITOUS



L F
O O
O U
K R

Bicycles were
UBIQUITOUS

EMMA SAW
AW21

FINAL LOOK ONE



EMMA SAW
AW21



Bicycles were
UBIQUITOUS



FINAL LOOK TWO