



Design Portfolio

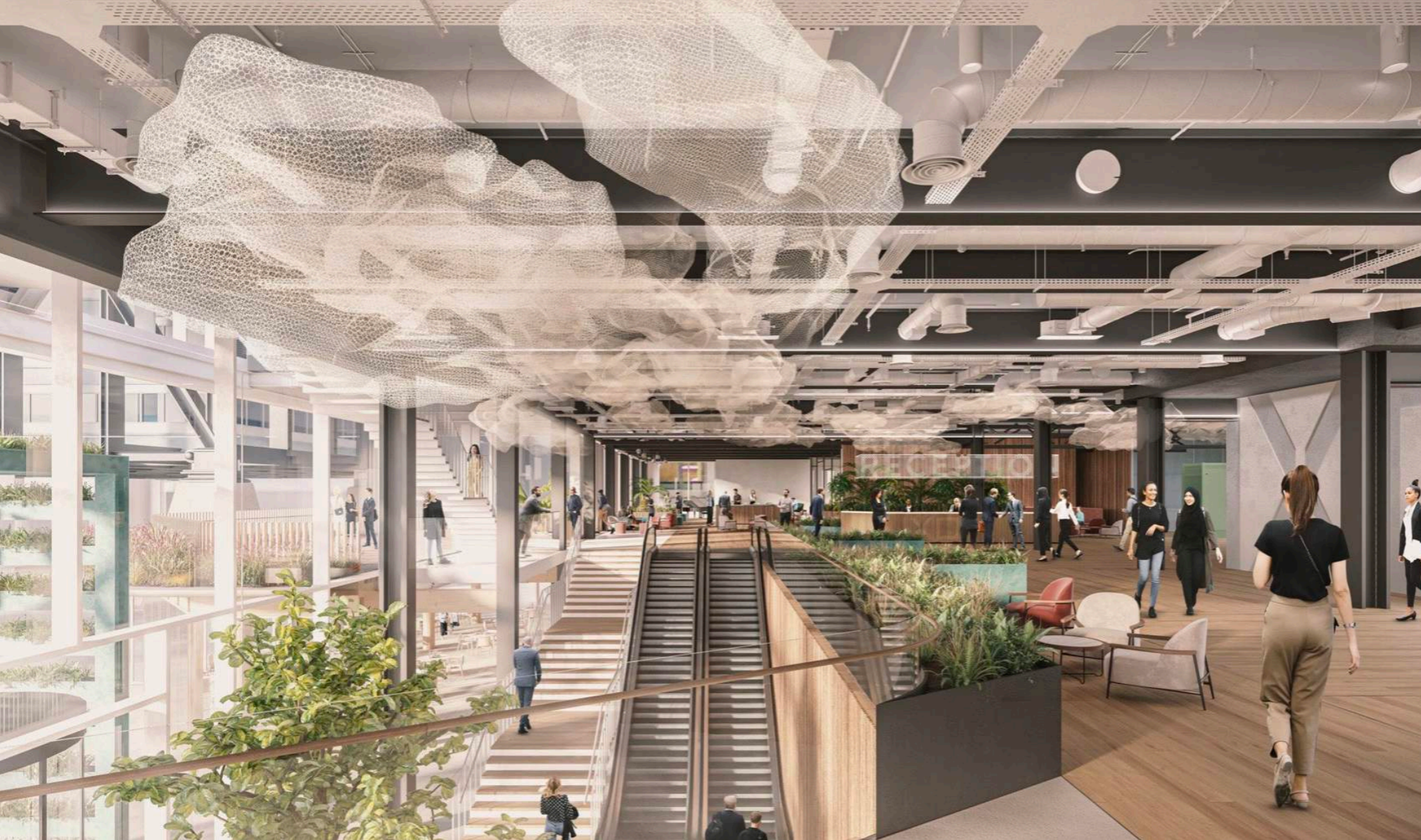
Olivia Whiteley

Internship
Fletcher Priest
Architects

I've 18 months experience as an Interior Design Intern with London based architecture practice Fletcher Priest Architects. Here, I've been able to refine and learn new skills, and experience the pace of industry. I've worked with industry giants, such as British Land, JPM Morgan, and City of London, in which most of these projects remain unfinished or confidential.

Olivia Whiteley
Interior Designer

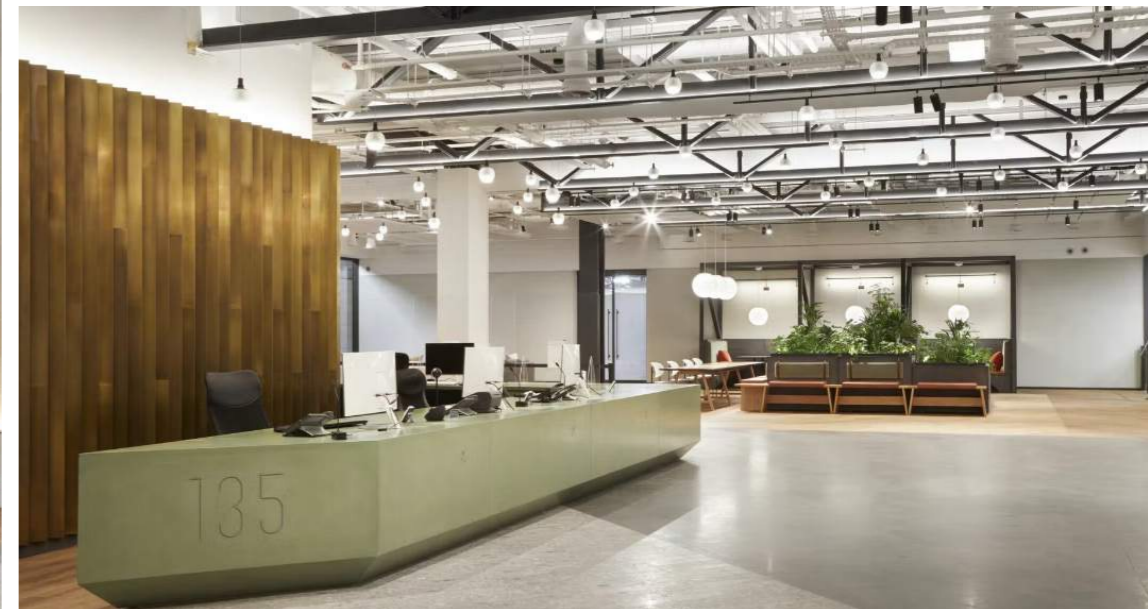
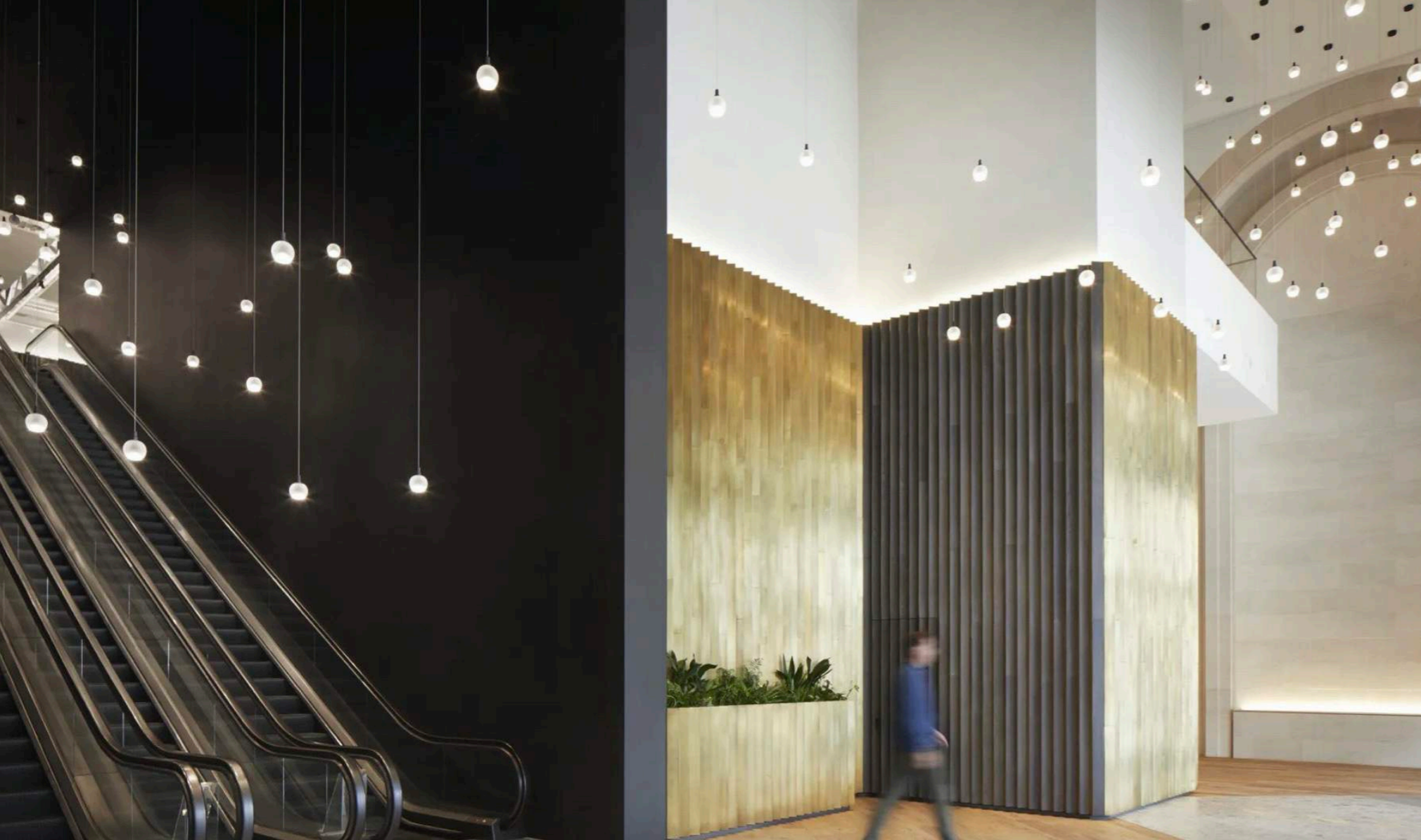
o.whiteley@fletcherpriest.com



One Exchange Square

My Role: Materiality
and Concept Boards

I was involved in the early stages of the design process, where I was responsible in conducting a research project into upcoming sustainable materials. This formed a huge part of the concept of the space, in which these materials are to be implemented upon work starting in 2023.



135 Bishopsgate

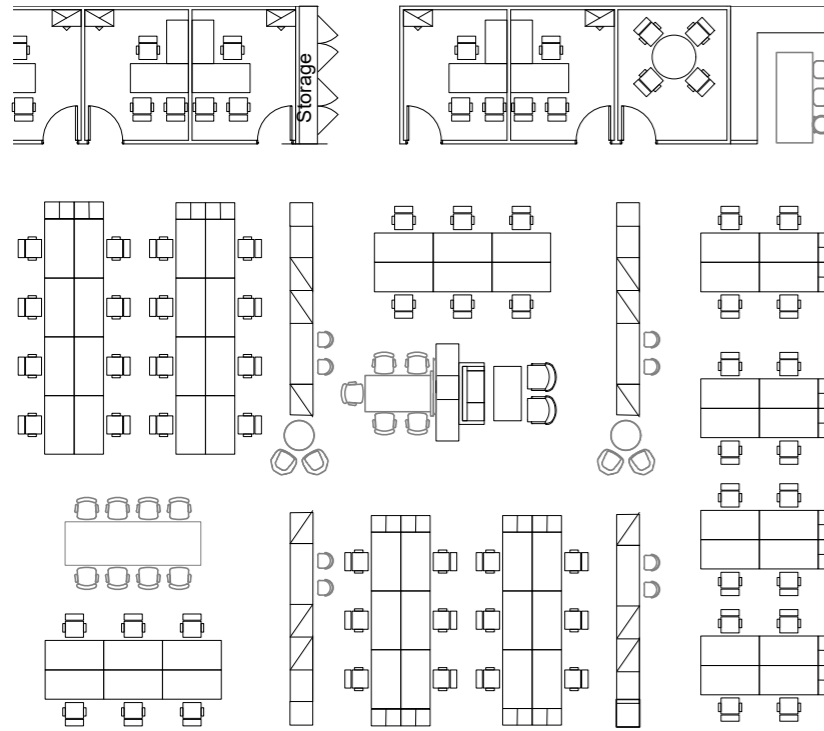
My Role: Product
Specification and
Test Fits

I had the opportunity to specify furniture and finishes for 135 Bishopsgate, which meant referring to technical specifications and meeting with suppliers. I was involved in the space planning process, through test fits which I amended throughout my whole placement.



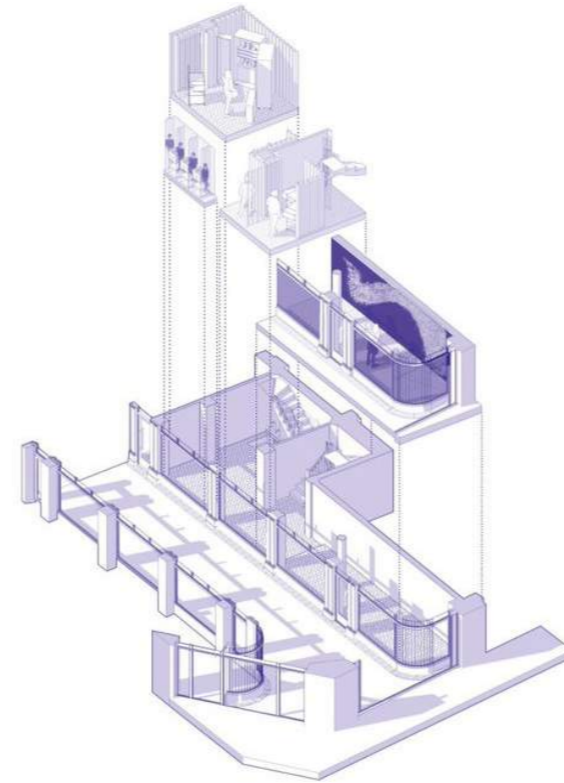
Porters Place
My Role: Marketing,
Signage and
Wayfinding

Working through the final stages of Porters Place, I was involved in designing the signage and wayfinding for the amenities within the building and the signage for the exterior elevation. I was also involved in creating the portfolio that was used to advertise the space to potential tenants.



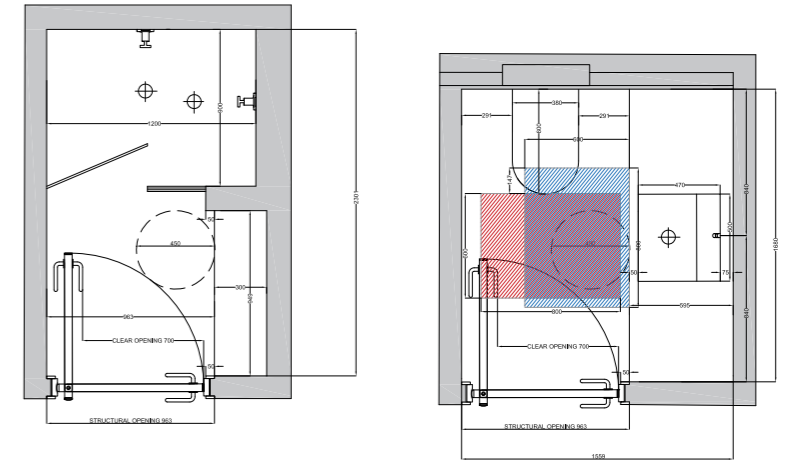
My Role : Test Fits

Test Fits have been a huge part of my role within the team, with most projects requiring a range of test fits depending on their requirements. This meant that AUTOCAD was necessary, and has allowed me to practice my skills in space planning and commercial layouts.



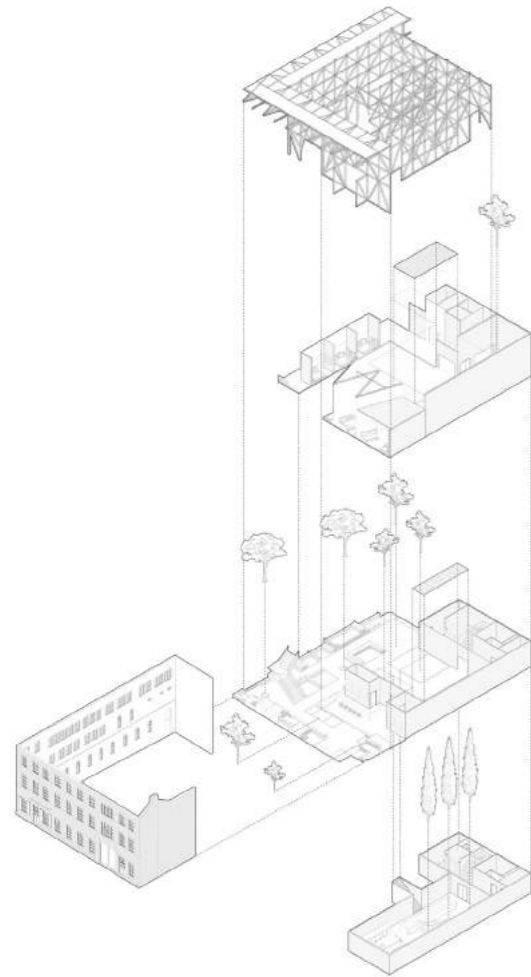
My Role : 3D Modelling and Illustration

Using 3D modelling software and Illustrator, I've been able to draw up conceptual axonometric illustrations that have been used to advertise the space to potential tenants.

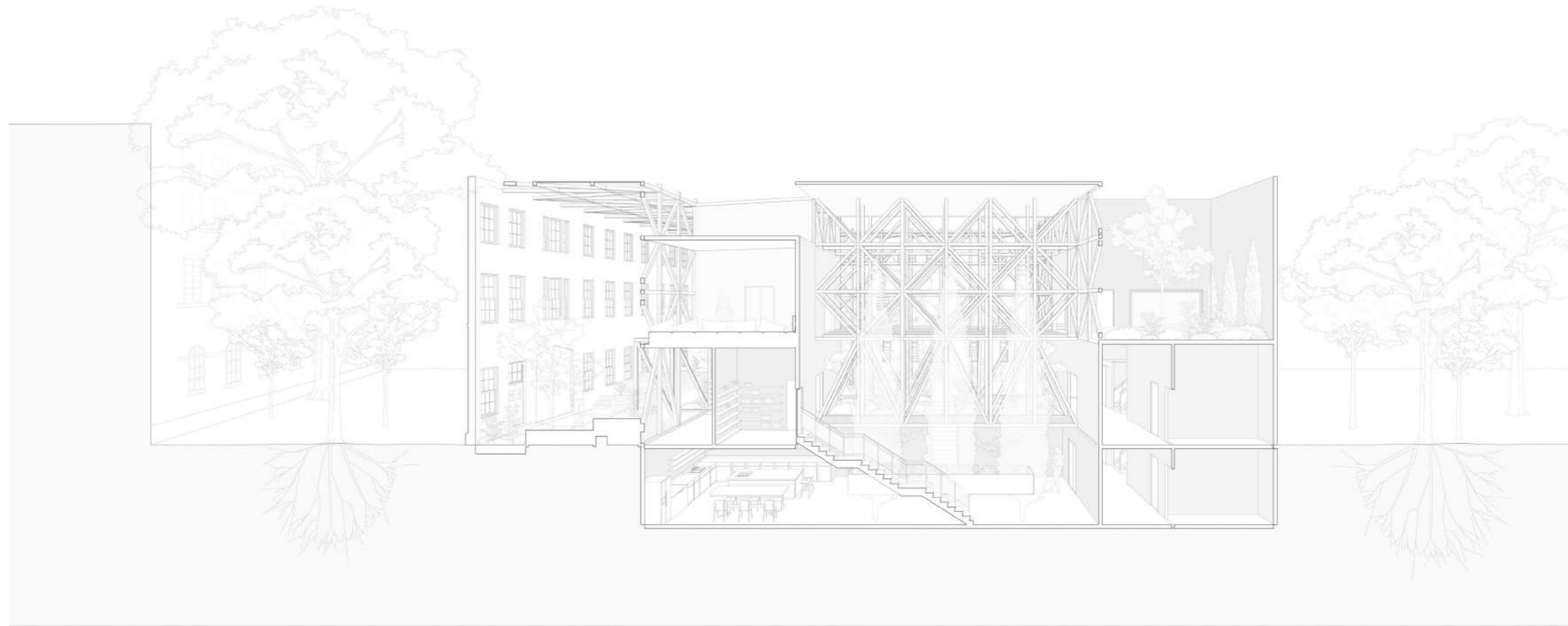


My Role : Technical Detail Schedules

Over all projects technical schedules have been crucial in communicating our design. In particular I've drawn up an indicative best practice superloo and shower cubical that has been communicated with architects and been implemented in relevant WC blocks.



Exploded Axonometric



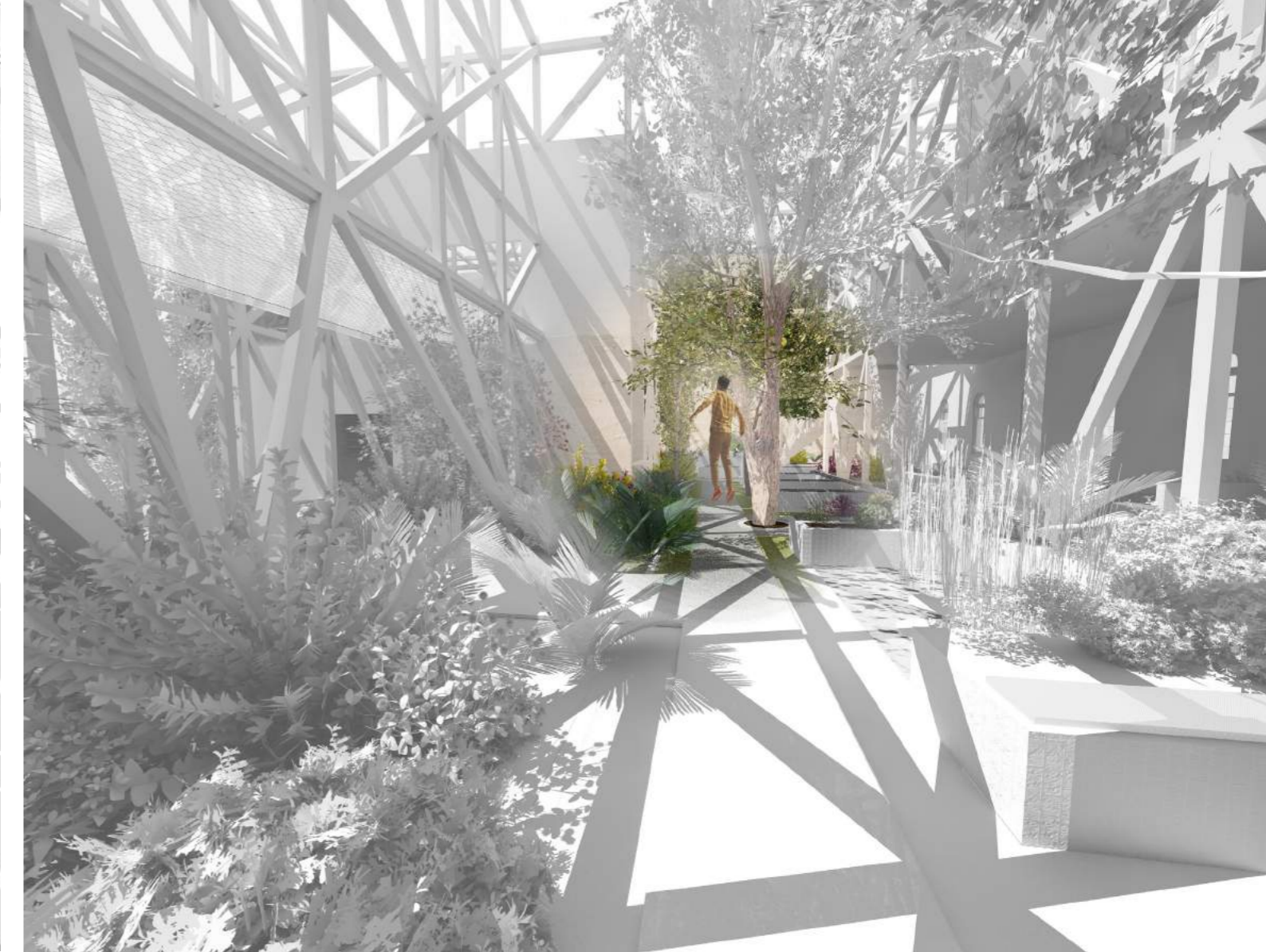
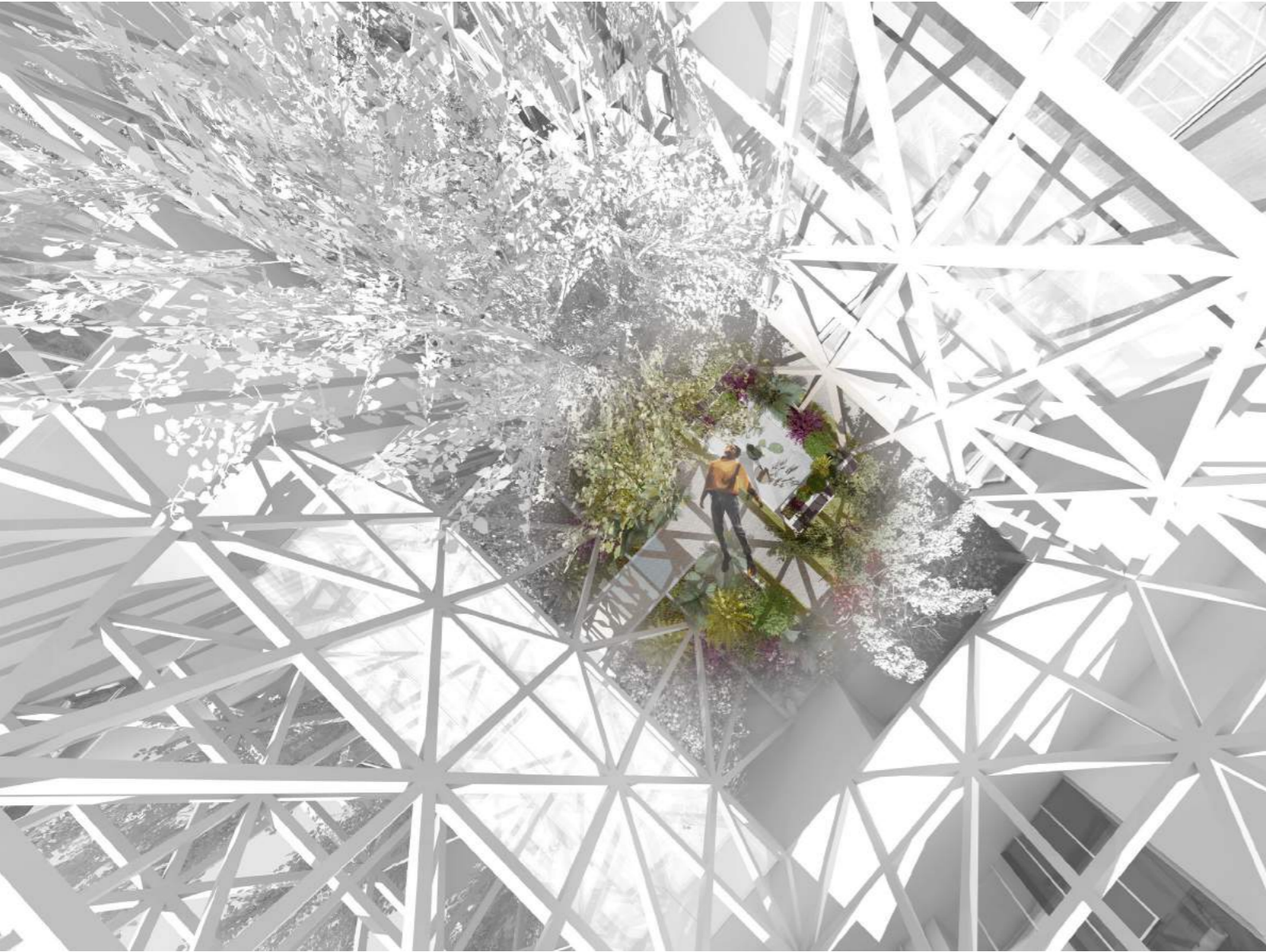
Section & Site

A Psychedelic Retreat University Project

A Psychedelic Retreat aims to change the narrative of drug culture as we know it. This involved creating a space where people could gather to safely experience psychedelics, much like how they would meet up at a pub or a club. The garden consumed the ruin of the existing building, much how psychedelics consume the mind.



Visuals
A Psychedelic Retreat



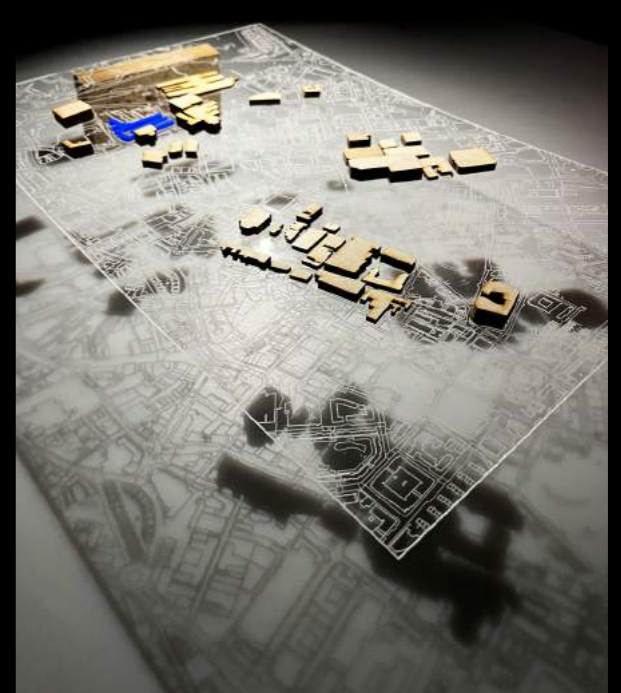
Visuals

A Psychedelic Retreat



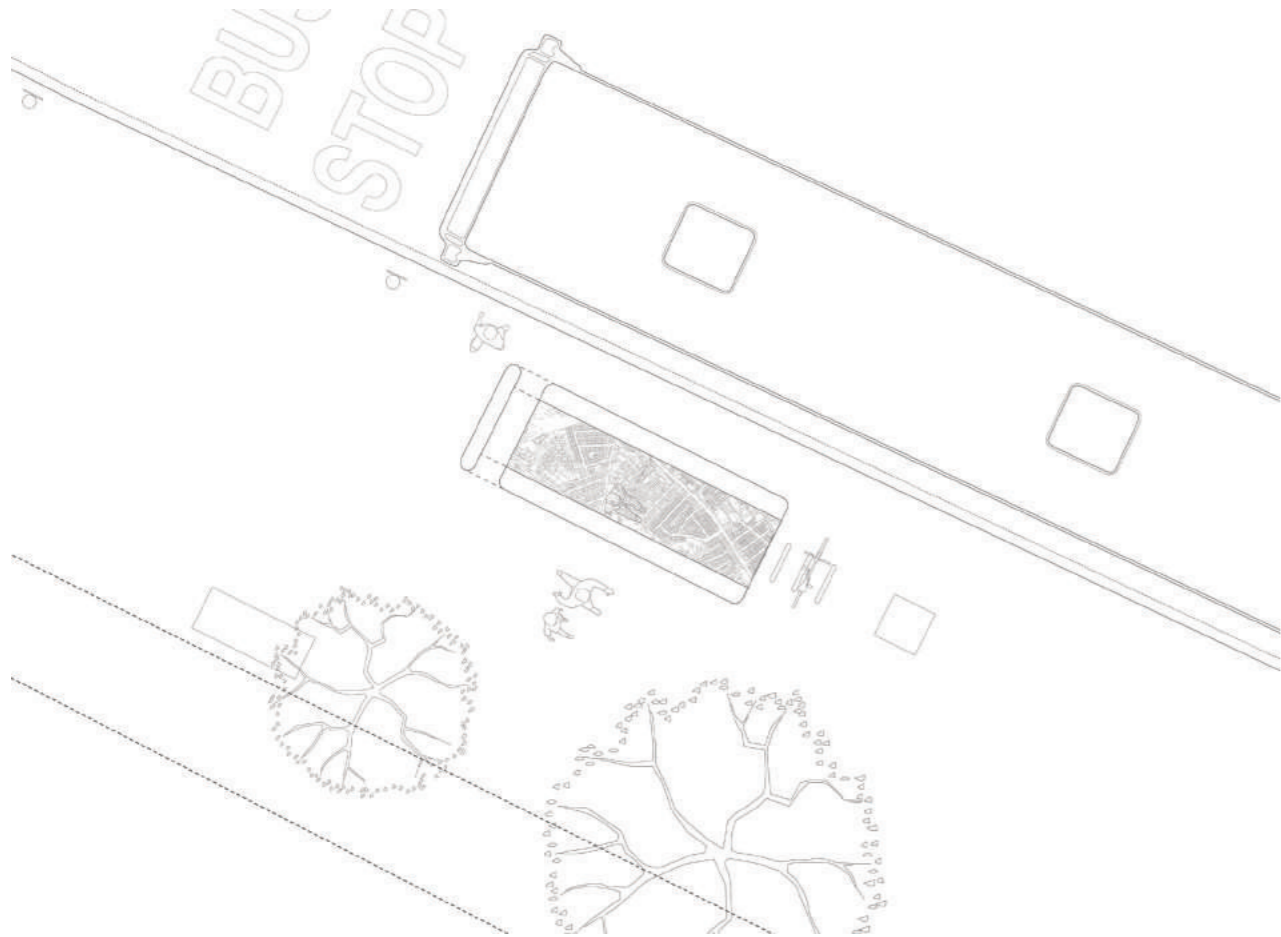
Social Interchange
University Project

Social Interchange focuses on design for transport, and how we can better connect Sheffield. Beginning the design process with the bus stop, I'd designed a series of bus stops personalised for each of Sheffield's 'mini cities.'

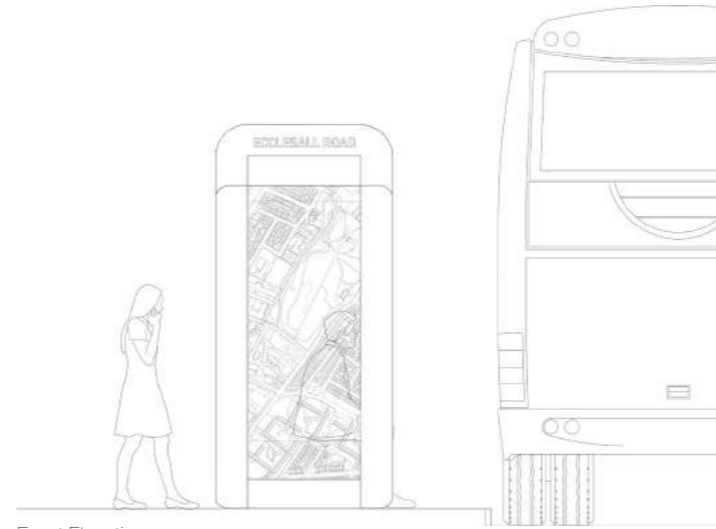


Model Making Social Interchange

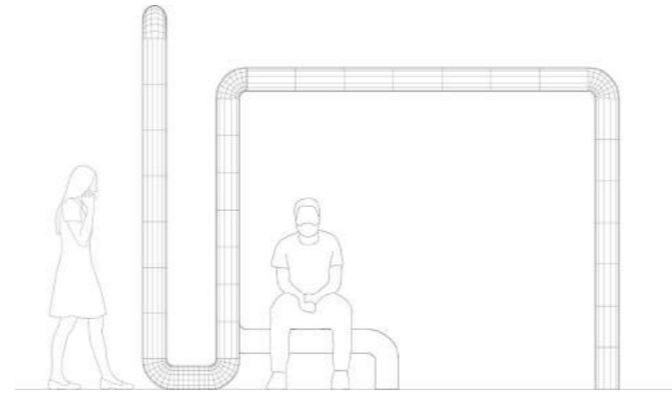
To better understand the topography of each of Sheffield's mini cities, I'd experimented with model making. This included laser cutting five of Sheffield's most exciting places in Perspex, and modelling the iconic building's in each district.



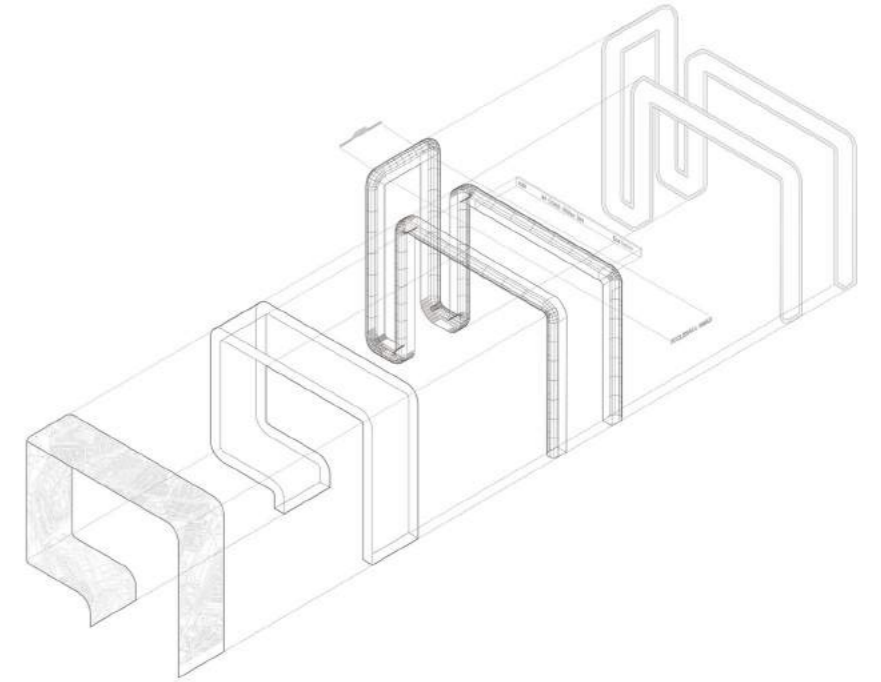
Site Plan



Front Elevation



Left Elevation



Exploded Axonometric

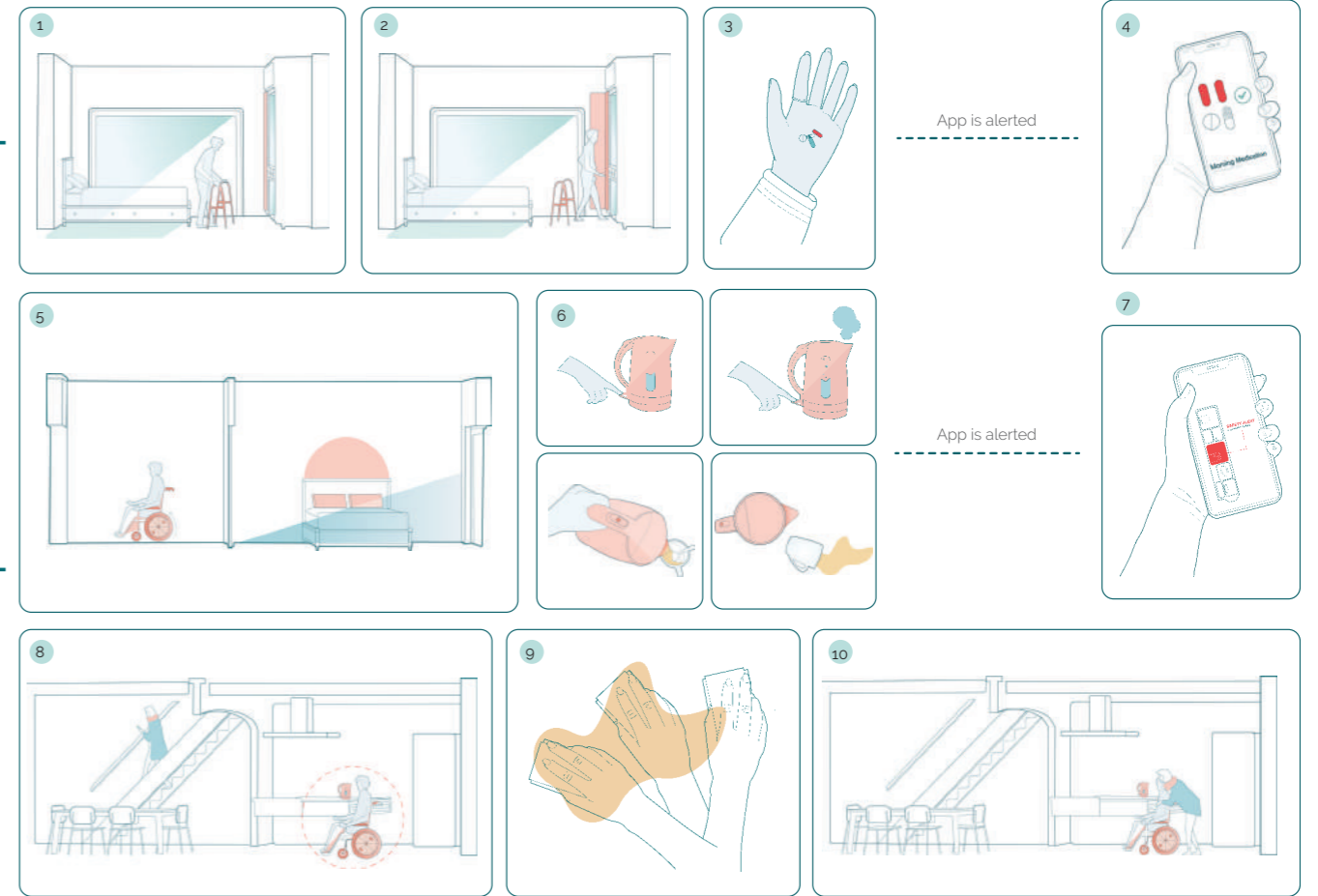
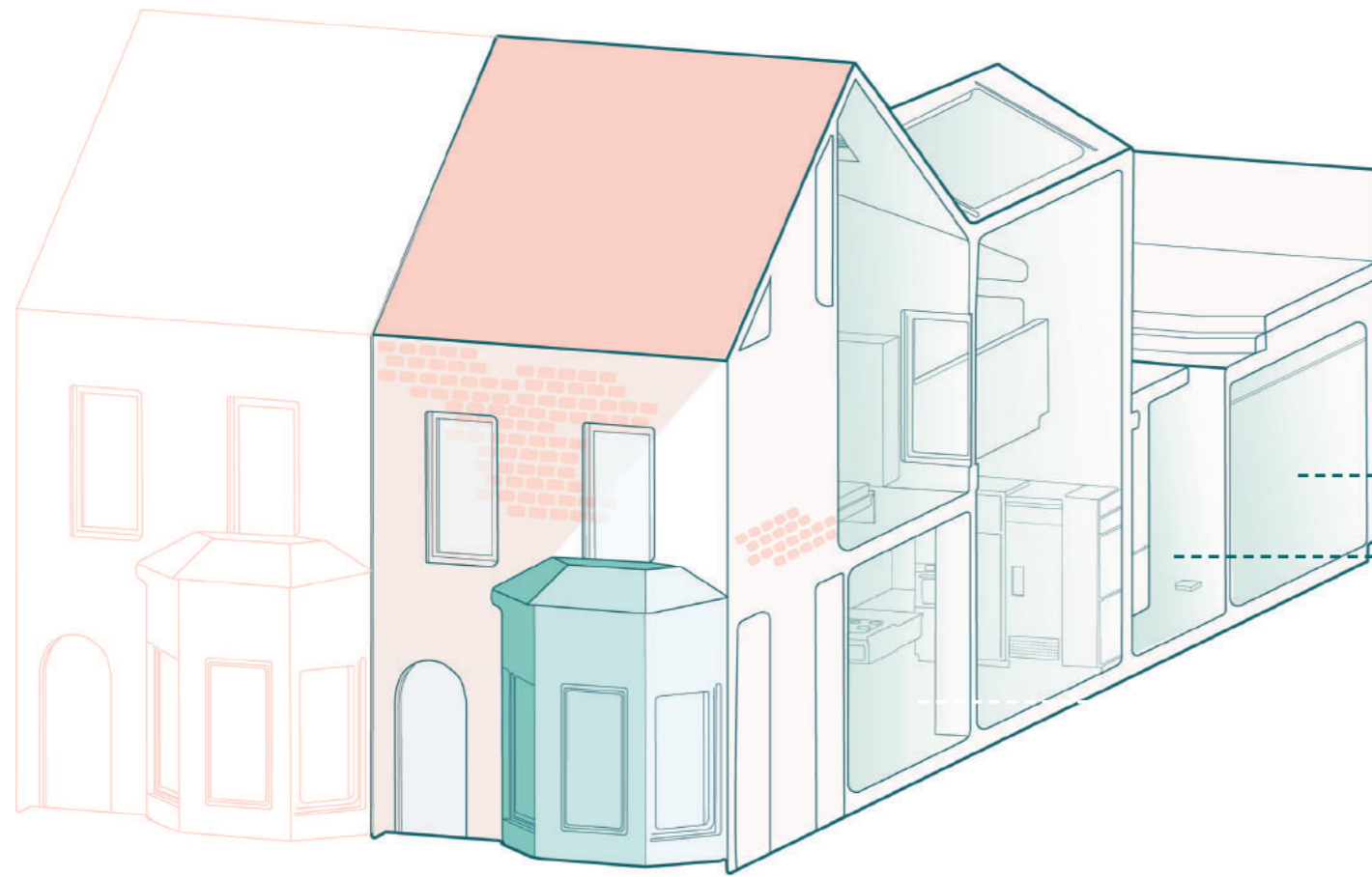
Technical Drawings
Social Interchange



The Smart House
University Project

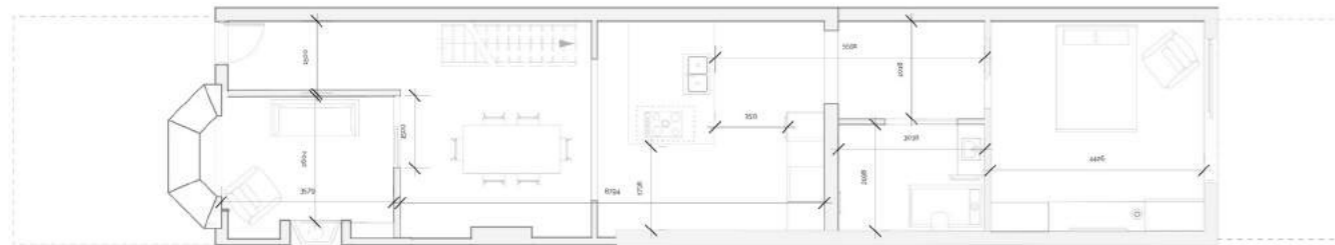
As life expectancy increases, spaces suitable for an aging population are scarce. With just 9 percent of housing in England being suitably accessible, RSA ran a design competition for proposals that would tackle housing we see today. This project was a shortlisted submission for the Diversity, Equality and Inclusion Award in the Re-Define 2021 show by Interior Educators.



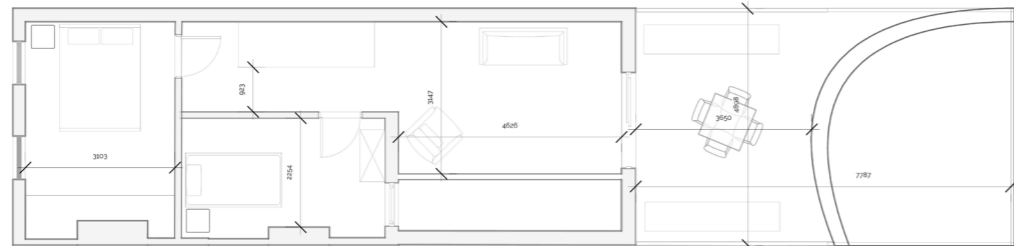


Concept
The Smart House

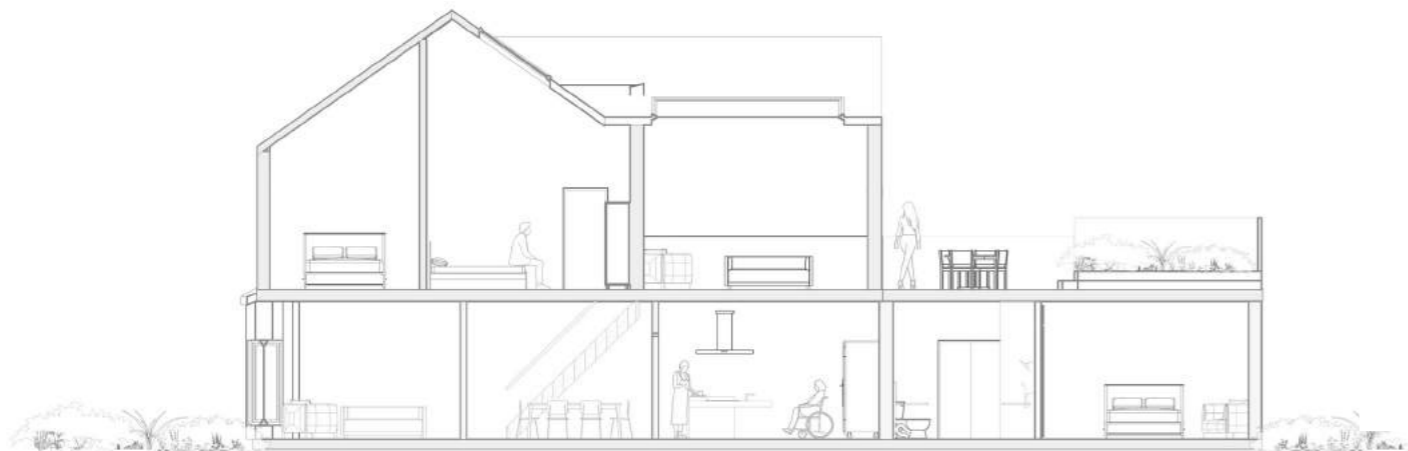
By creating The Smart House, an elderly person and carers can live safely without compromising comfort. Partnered with a smart app, the house indicates any trips, falls or spills, as well as regulating the temperature and light of the home. Easily accessible appliances mean an elderly person can continue to live independently, with technology making this easy.



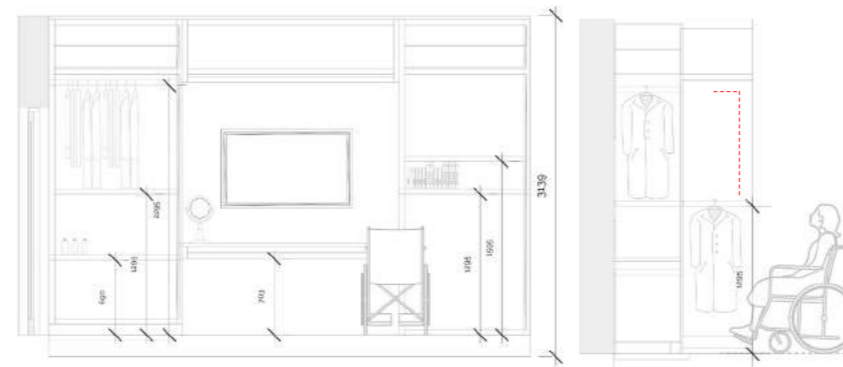
Ground Floor Plan



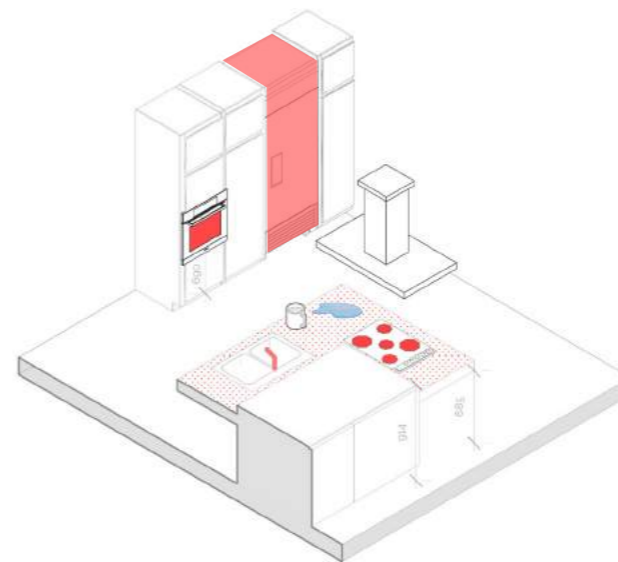
Second Floor Plan



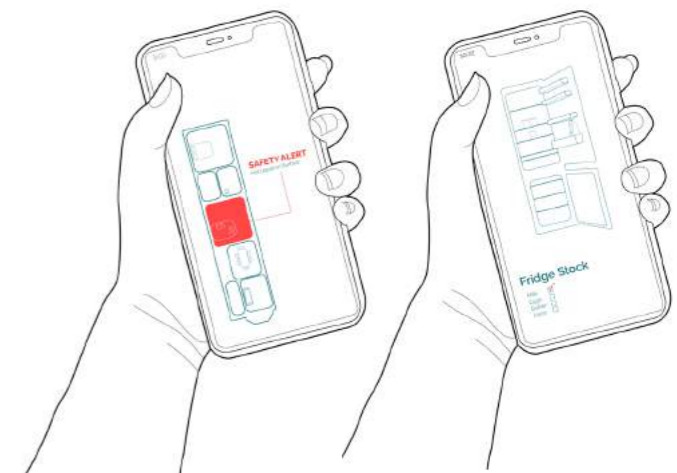
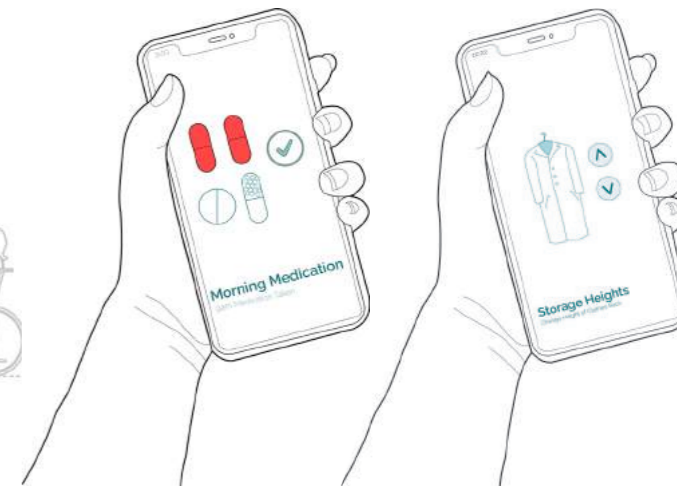
Section of Both Floors



Technical Drawings of an Accessible Bedroom

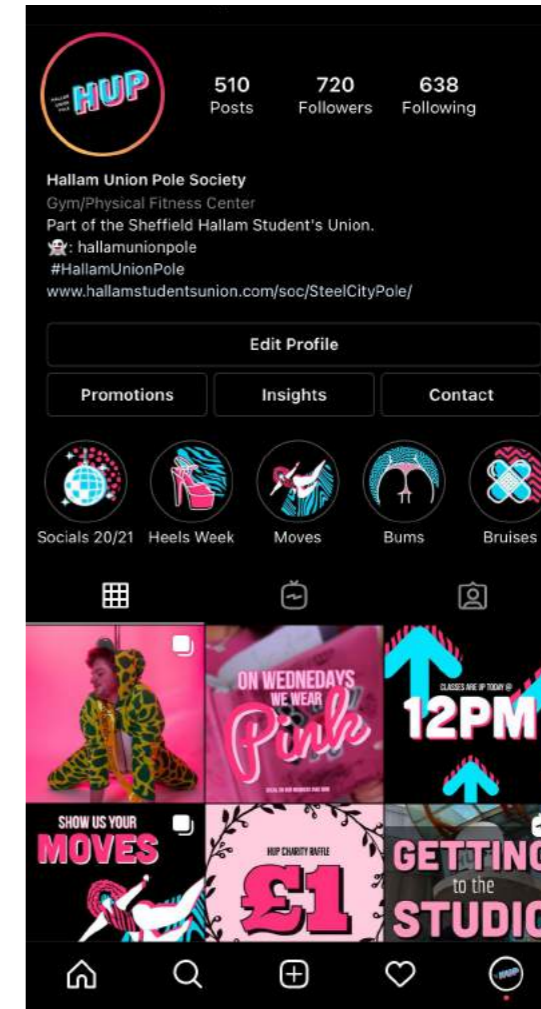


Technical Drawing of an Accessible dKitchen



Concept App

Technical Drawings The Smart House



Hallam
Union Pole
Rebranding

Between 2020-21, I was involved in being the Media Officer for my university society. This involved rebranding the society, creating new inclusive logos, and ensuring the brand was cohesive amongst all our social media.