



JG

JULIA GDULA
Design Portfolio

julia.gdula@gmail.com



Online Portfolio and
additional information
available here

X Hotel, Manchester's Northern Quarter

As guests arrive, they're instantly immersed in an authentic and eccentric reception area, where bold design and a warm welcome set the tone. The lounge and bar follow with an invigorating, enlivening atmosphere - the social heart of the hotel where connection comes naturally. Just beyond, work & play spaces blend productivity and leisure in a setting that's both exciting and transportative. In the restaurant, a lively and enticing ambiance invites guests to linger over bold flavors and dynamic surroundings. Outside, the patio offers a flamboyant, playful retreat - a breath of fresh air and burst of energy. Even the circulation spaces are more than transitions- they're designed to be exciting and immersive, guiding guests through a rich and layered ground floor journey



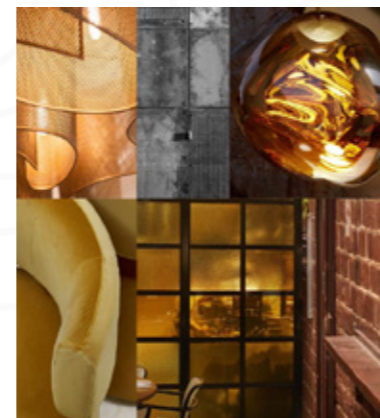
Ground floor plan created using AutoCad and Photoshop



FF&E for Reception Space



Material Board for Ground Floor



Inspiration board for Reception



Proposed Render of Reception Space- created using Sketchup and Vray

X Hotel, Manchester's Northern Quarter

X Hotel reimagines Manchester's Northern Quarter by blending its industrial heritage with the district's bold creative energy. Drawing from historic red-brick architecture, exposed materials, and the area's indie music legacy, the design mixes raw authenticity with playful, vibrant details. The ground floor becomes an immersive social hub—with an eccentric reception, energetic lounge and bar, flexible work-play zones, and a lively restaurant—while outdoor and circulation spaces offer dynamic, expressive moments. Altogether, X Hotel captures the youthful, eclectic spirit of the Northern Quarter, creating a place for guests to work, play, and connect.

Project Duration: 2 weeks

Key skills:

AutoCAD,

Sketchup

V-ray

Adobe Photoshop

Adobe Indesign

Material boards

Presenting

Sensory design incorporating scent, colour theory, and sounds



Restaurant render created using Sketchup and Vray

X Hotel, Manchester's Northern Quarter

The bar will be the vibrant chrome heart of the concept, centrally positioned to seamlessly divide the front lounge and restaurant areas. With the raw, exposed concrete ceiling and exposed brick framing the space, it provides a striking backdrop for this dynamic hub that pulses with energy throughout the day. Whether it's the lively breakfast buffets, indulgent midday escapes, or cheeky after-work drinks, the bar adapts, creating a unique atmosphere for each moment.
 FRAGRANCE - Jasmine, Sandalwood & Citrus (uplifting, mood enhancing effects)
 SOUNDTRACK - Lady and Man, Khruangbin



Render of BarLounge using Sketchup and Vray



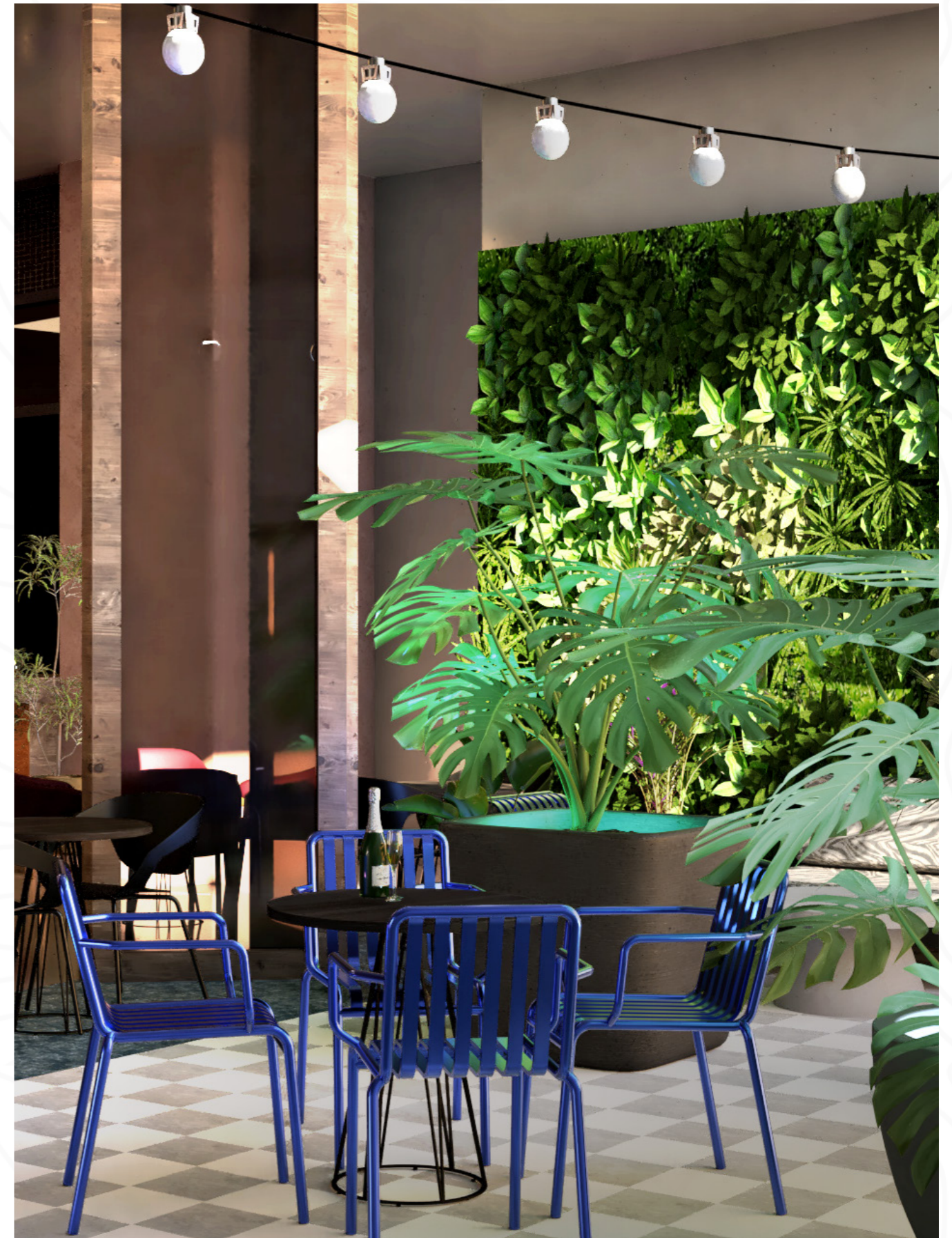
FF&E for BarLounge



Zoning Diagram for Ground Floor



Inspiration board for Patio



Proposed Render of Patio- created using Sketchup and Vray

Ghosts of The Concert

The aim of this project is to create an interactive archive experience within the Samuel Worth Chapel celebrating the work of Mark Fisher, the experience will be evocative and engaging. The narrative journey is the key focus of the project as well as creating an emotional and atmospheric experience for visitors, inspired by Mark Fisher's legacy by featuring his work and honouring his design philosophy.

Project Duration: 12 weeks

Key skills:

- Vectorworks,
- Sketchup
- V-ray
- Adobe Photoshop
- Adobe Indesign
- Adobe Illustrator
- Premier Pro
- Academic Report Writing



Proposed Section created using Sketchup, Vray and Photoshop

Ghosts of The Concert

As guests arrive, they're instantly immersed in an authentic and eccentric reception area, where bold design and a warm welcome set the tone. The lounge and bar follow with an invigorating, enlivening atmosphere - the social heart of the hotel where connection comes naturally. Just beyond, work & play spaces blend productivity and leisure in a setting that's both exciting and transportative. In the restaurant, a lively and enticing ambiance invites guests to linger over bold flavors and dynamic surroundings. Outside, the patio offers a flamboyant, playful retreat - a breath of fresh air and burst of energy. Even the circulation spaces are more than transitions- they're designed to be exciting and immersive, guiding guests through a rich and layered ground floor journey

General Site Map



- Site
- Cemetery Grounds
- Park
- Green Space
- Residential
- Commercial
- School
- Retail
- Industrial
- River
- Track
- Footpath
- Bus Stops

Sun Path- Daylight hours



- JAN- 08:20 - 15:58
- FEB- 07:49 - 16:49
- MAR- 06:52 - 17:44
- APR- 06:38 - 19:41
- MAY- 05:30 - 20:36
- JUN- 04:43 - 21:24
- JUL- 04:41 - 21:37
- AUG- 05:21 - 21:01
- SEP- 06:15 - 19:55
- OCT- 07:07 - 18:42
- NOV- 07:04 - 16:33
- DEC- 07:58 - 15:51

Building Use



- Cemetery Buildings
- Residential
- School/Education
- Retail
- Commercial
- Industrial



Isometric Site Map

Site Map created using Vectorworks and Photoshop

The Samuel Worth Chapel is located within the Sheffield General Cemetery, it is a Grade 2* listed building with historical significance. It is a Nonconformist Chapel, which underwent restoration work in 2016 to restore the ruins of the original design by Samuel Worth in 1836. Following the building's restoration in 2016, it has been repurposed as a venue for hire, which hosts various music events, screenings, ceremonies such as weddings, lectures and talks, it is a small intimate venue with good acoustics as well as a unique charm due to its location and design.

The design of the building itself contains many 'Egypto-Greek' influences, such as the Greek Doric Portico with substantial Doric style columns which create a very large imposing building within the cemetery. The site is accessible from various walkways within the cemetery with a main access route up a staircase which allows for full view of the chapel rising above the rest of the grounds.



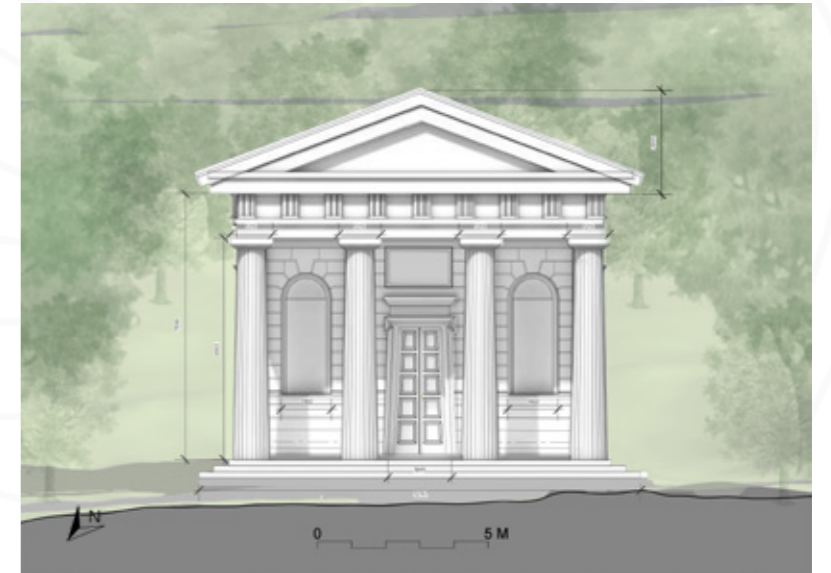
Foam board Site Model 1:100

Handmade Foam board Scale model of existing building

Existing Floor Plan



Existing Front Facade



Existing Front Facade



Studies of Existing Building created using Vectorworks and Photoshop

Ghosts of The Concert

PROPOSAL



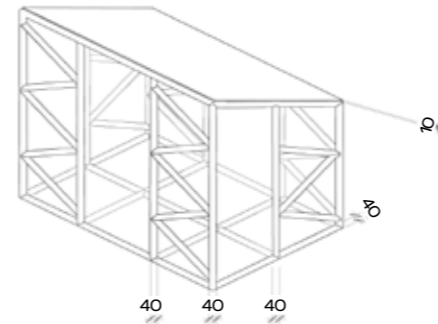
Floor Plan

- ① Entrance
- ② Jean Michel Jarre sculpture
- ③ Truss system
- ④ Projection Stand
- ⑤ U2 Claw Sculpture
- ⑥ The Wall seating sculpture
- ⑦ Staff Room
- ⑧ Toilet
- ⑨ Disabled Toilet
- ⑩ Access to lighting desk

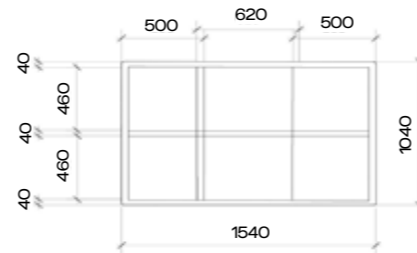
Floor plan created using vectorworks, Photoshop and Illustrator

④ Projection Stand Details

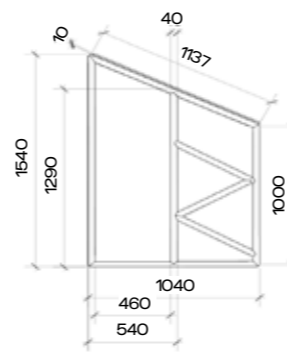
Dimensions in mm



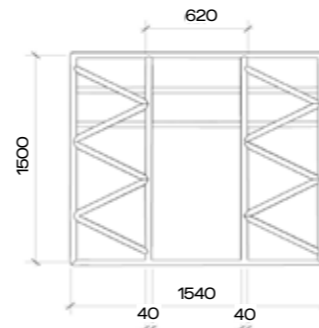
Isometric View



Top Plan without projection screen

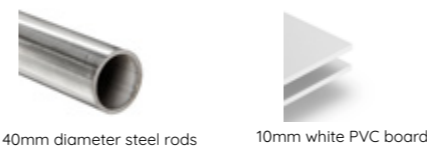


Side View



Back View

Materiality of Projection Stand



40mm diameter steel rods

10mm white PVC board

Section A



Lighting Example

The lighting plan for the space is the key focus of the space, a series of spotlights is mounted on the truss structure, these are accompanied by projectors which display Mark Fisher's work on the wall and projection stands. The lighting changes throughout the experience and this is just one phase of the lighting scheme.

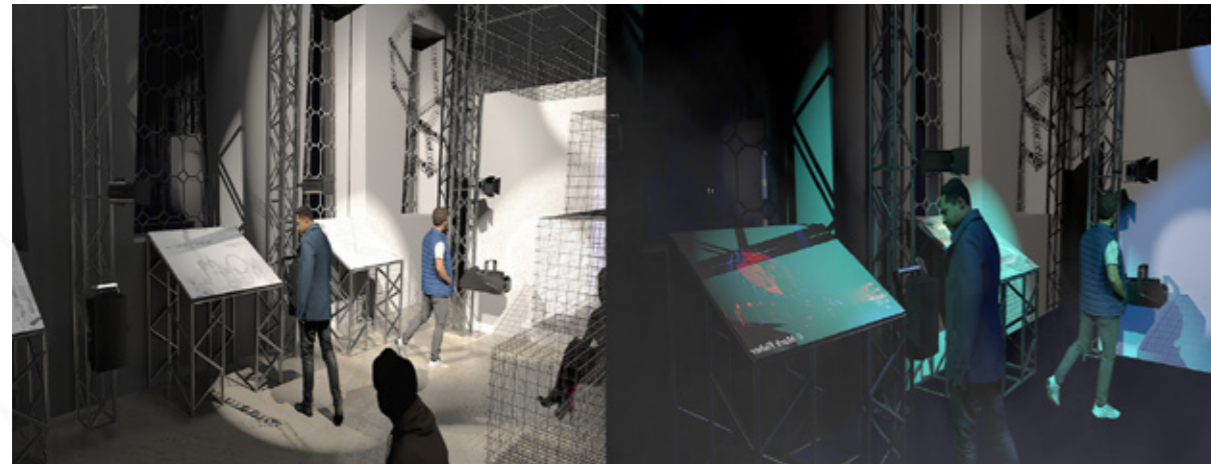


Render created using Sketchup and V-Ray

Ghosts of The Concert

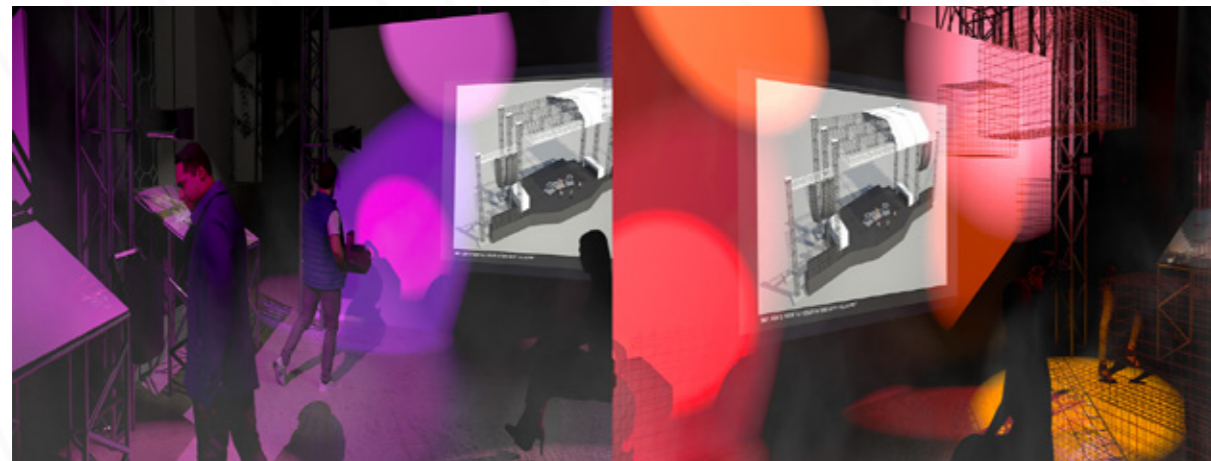
The project recreates a Mark Fisher concert experience through a fully sensory, narrative-driven journey. Using Tresoldi-style wire mesh structures alongside lighting, projections, and multisensory elements—sound, touch, smell, and taste—the design evokes the atmosphere and energy of Fisher’s iconic stage work. Guided by psychological research on emotion and anticipation, the installation immerses visitors in the memory and emotional arc of a live concert.

USER JOURNEY



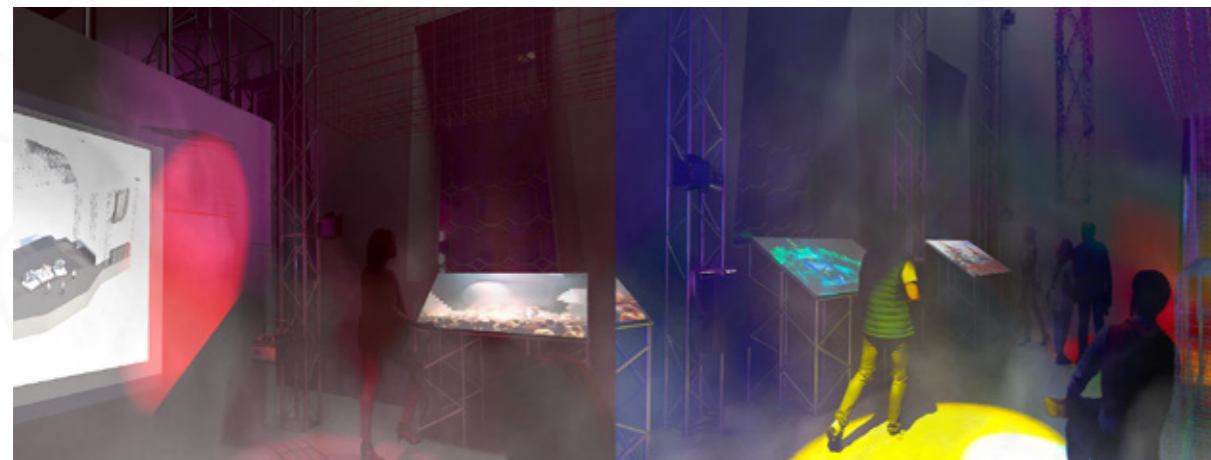
1 The experience begins with neutral lighting, projections of Fisher’s drawings and a faint hint of vanilla in the air to promote a sense of nostalgia, in this environment the mesh structures become the focus, song begins to play through the speakers

2 The lighting then shifts to a series of low-arousal blue tones to build anticipation, the projections change to atmospheric photos of Mark Fisher stages, the smoke machines activate releasing citrus scented notes energising users in the space, the audio begins to build with faint cheers and clapping



3 The stage lights then shift to pink and purple tones, the lights cast shadows from the mesh structures and shift with each lighting change, the smoke intensifies increasing the olfactory experience with citrus smells, the music continues to build

4 The lighting then shifts to a series of high-arousal red and orange tones, the smoke continues to build alongside the music and vibrations from the speakers start to be felt as a tactile sensation

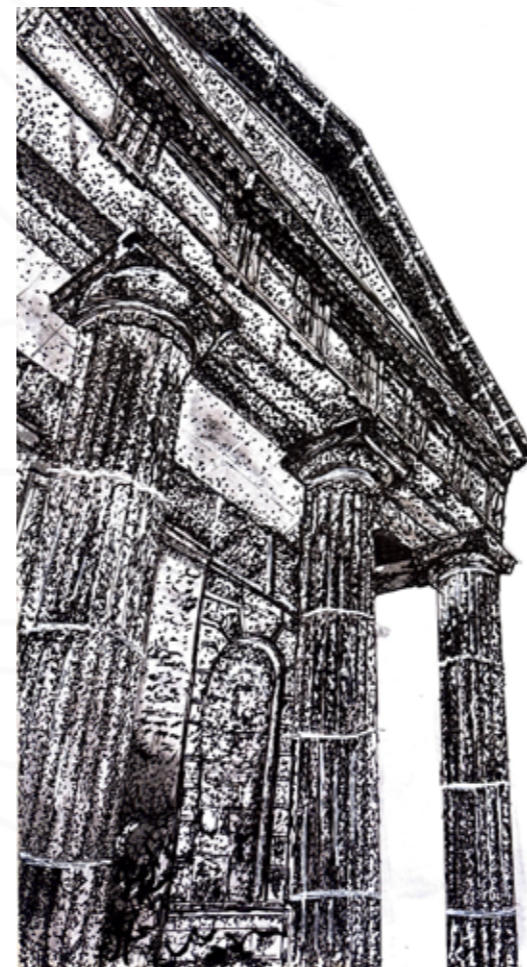


5 The lights continue to shift mixing the red tone lights with a multicolour lighting plan, creating a gradual build in anticipation mixing with a layered visual experience. The smoke intensifies and music continues to play alongside the lighting changes to create a flow

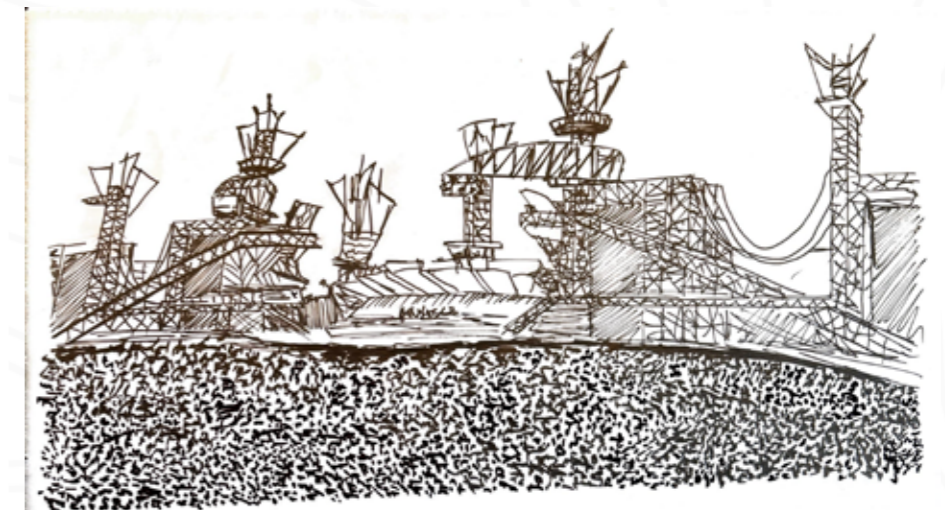
6 All the lights shift to multicolour, creating a highly stimulating environment, the smoke is most intense creating beams of light from the spotlights illuminating the space, the music reaches a high and then the experience repeats at different tempos



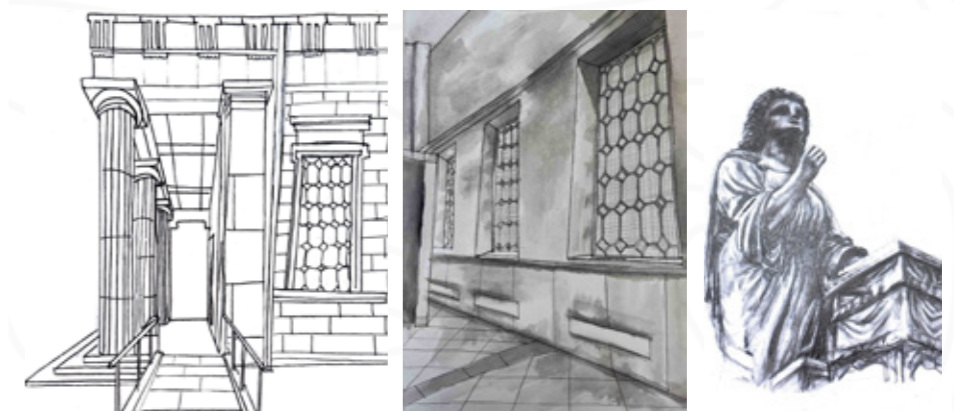
Section C



Hand Drawing of site



Sketch analysing Mark Fisher’s stage designs



Fineliner, watercolour and pencil sketches following site visit

CIUK 2025 STUDENT DESIGN COMPETITION

Cotton Bloom Residence

This apart-hotel is located in Manchester and is designed for 1-2 adults who are beginning to work in the city, the space aims to promote a healthy work-life balance through colour psychology. Manchester has links to the history of the cotton industry which has been linked throughout the design. The cotton industry can be weaved through my design through textiles such as linens and upholstery, as well as elements of woven patterns and shapes resembling cotton plants.

Project Duration: 2 weeks

Key skills:

Vectorworks
Adobe Photoshop
Adobe Indesign
Adobe Illustrator
Presenting in front of Judges



Render using Vectorworks and Photoshop

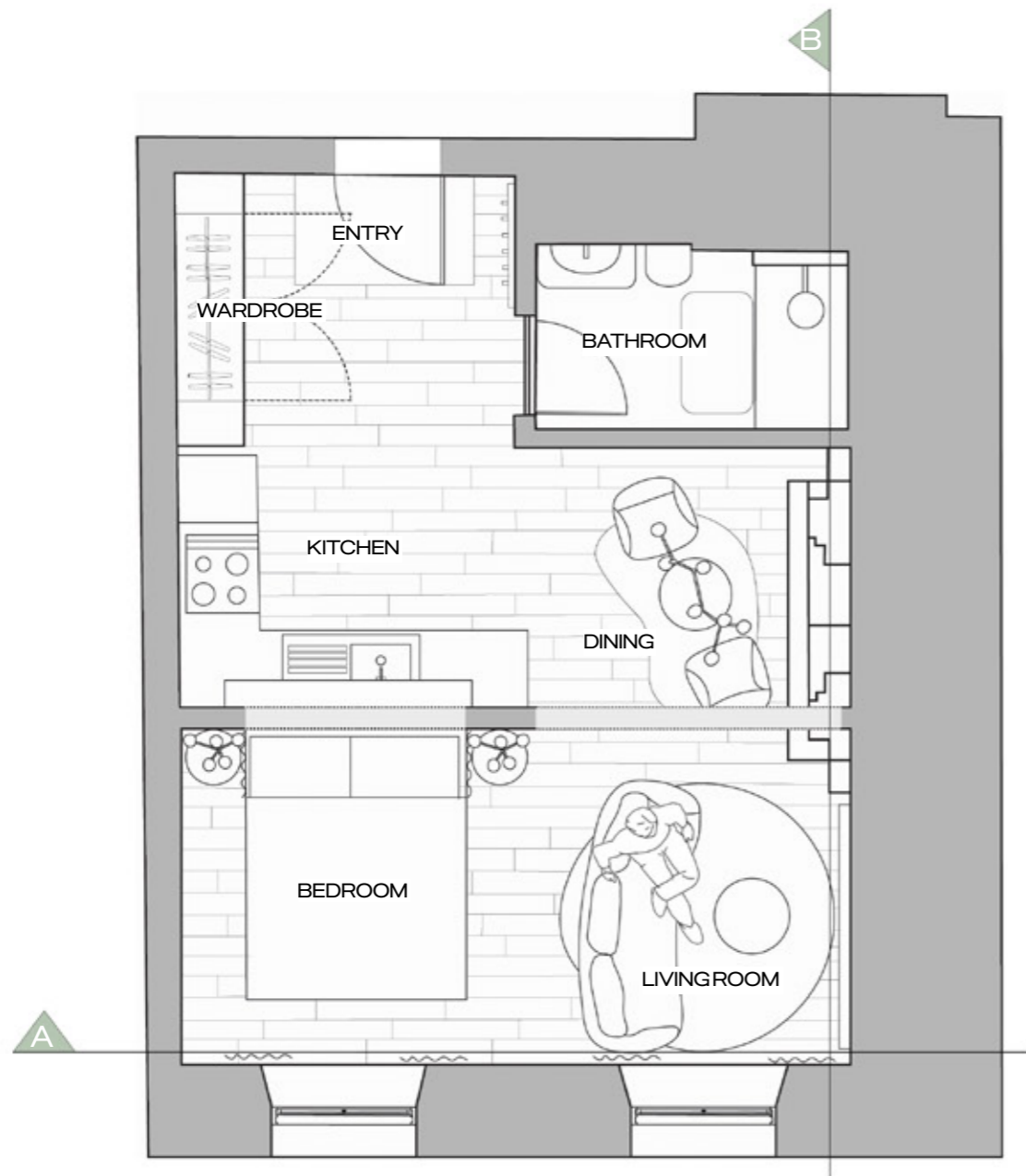


Awards:
CIUK Next Generation
Exceptional Student
Award Winner 2025

CIUK 2025 STUDENT DESIGN COMPETITION Cotton Bloom Residence

This design uses colour psychology to support the apart-hotel's goal of restoring work-life balance for newcomers to Manchester. Peach tones bring positivity and gentle energy, while green fosters stability, calm, and mental clarity. Together, these colours help create a soothing, revitalising environment that enhances mood, supports focus, and encourages overall wellbeing.

Awards:
CIUK Next Generation
Exceptional Student
Award Winner 2025



Plan drawing
Dimensions of individual spaces
ENTRY- 5.9m²
BATHROOM- 4.3m²
KITCHEN- 5.4m²
DINING- 5.2m²
BEDROOM-7.3m²
LIVING ROOM- 6.2m²

-  MORRIS & CO-
Spring Thicket Dawn Chalky Matt paint
-  YES COLOURS-
Fresh Peach
-  AMTICO-
Chiltern Oak
-  SANDERSON-
Snowy Owl
-  MUDRAK & SONS-
Alchemist Sage Tile
-  SANDERSON-
Fountain Green



Section A- Bedroom view showing bed area, living room and dining

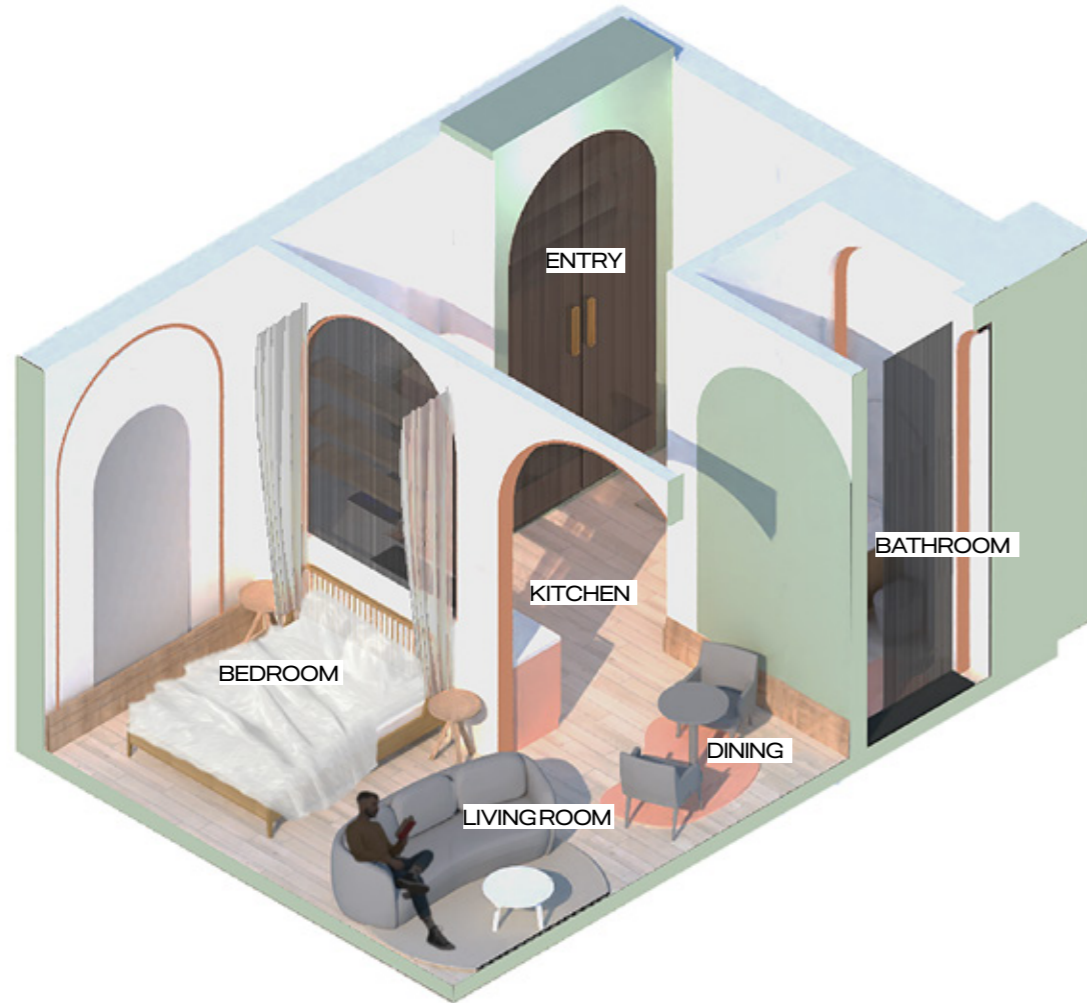


Section B- Long section showing living room, dining, kitchen and bathroom

CIUK 2025 STUDENT DESIGN COMPETITION Cotton Bloom Residence

The material palette subtly honours Manchester's cotton heritage through forms and textures inspired by the cotton plant and its manufacturing process. Rounded, fluffy shapes appear in furniture and lighting, while boucle upholstery and organic curves echo cotton's softness. Woven textures, sheer curtains, textured wallpaper, herringbone tiles, and fluted glass reference the transformation from raw cotton to woven textile, tying the space back to the city's industrial past.

Awards:
CIUK Next Generation
Exceptional Student
Award Winner 2025



Kitchen/Entry:



HANSGRÖHE-N S51 S5M-F450
Built-in sink 450 with drainer



AMTICO- Chiltern Oak
Flooring



HANSGRÖHE- Talis M54
Single lever kitchen mixer
210 with pull-out spout,
single spray mode

Bathroom:



JOHNSON TILES-
Melrose Moss Gloss



LAUFEN- PRO S Shower tray,
made of Marbond composite
material rectangular, linear
outlet at short side



ROCA- Luna REF:
A812402000 Mirror with
perimeter LED lighting



HANSGRÖHE- Xuniva U
Wash bowl 550/400
without tap hole and
overflow, SmartClean



HANSGRÖHE-
Metropol Single
lever basin
mixer 230 with
lever handle
and push-open
waste, brushed
bronze



HANSGRÖHE- EluPura S
Wall hung WC Set 540
AquaHelix Flush,
HygieneEffect with WC
seat and cover with
SoftClose and
QuickRelease, Slim



HANSGRÖHE- Pulsify
Select S Hand shower
105 3jet Relaxation



HANSGRÖHE- Xelu Q
Vanity unit Natural
Oak 780/475 with 2
drawers for wash
basin



MULLAN- Jordan
Double Globe Wall
Light IP65

Dining:



VESCO- Madhura
2623.88 wallpaper



LUUM- Oslin 702H



MORGAN- Chevy
Dining/Meeting Chair



MORGAN- City Dining Table

Bedroom:



BOSS- Triad TRI/2
Bedside Table



VESCO- Elara
8089.03 Drapes



LUUM- Oslin 701V
Lighting



MORRIS & CO- Spring
Thicket Dawn Chalky
Matt paint



AMTICO- Chiltern
Oak
Flooring

Living Room:



MORGAN- Bilbao 353



BOSS- Pause, Wait &
US- WAI/VOAK



MORRIS & CO- Spring
Thicket Dawn Chalky
Matt paint



AMTICO- Chiltern
Oak
Flooring

CIUK 2025 STUDENT DESIGN COMPETITION Cotton Bloom Residence

The design centres on architectural arches, inspired by Manchester landmarks like the Hulme Arches, the Town Hall extension, and the historic Crusader Mill. The floor plan is divided into four zones, with a fluted-glass archway at the entrance that draws in natural light and leads users from the kitchen and dining area into the living and sleeping spaces. The bedroom sits behind the only solid wall for privacy. Arches guide movement, subtly divide the open plan, and enhance limited natural light by reflecting it throughout the interior. Combined with strategic colour placement, they create a soft ambient glow that enriches the user journey and invites exploration.

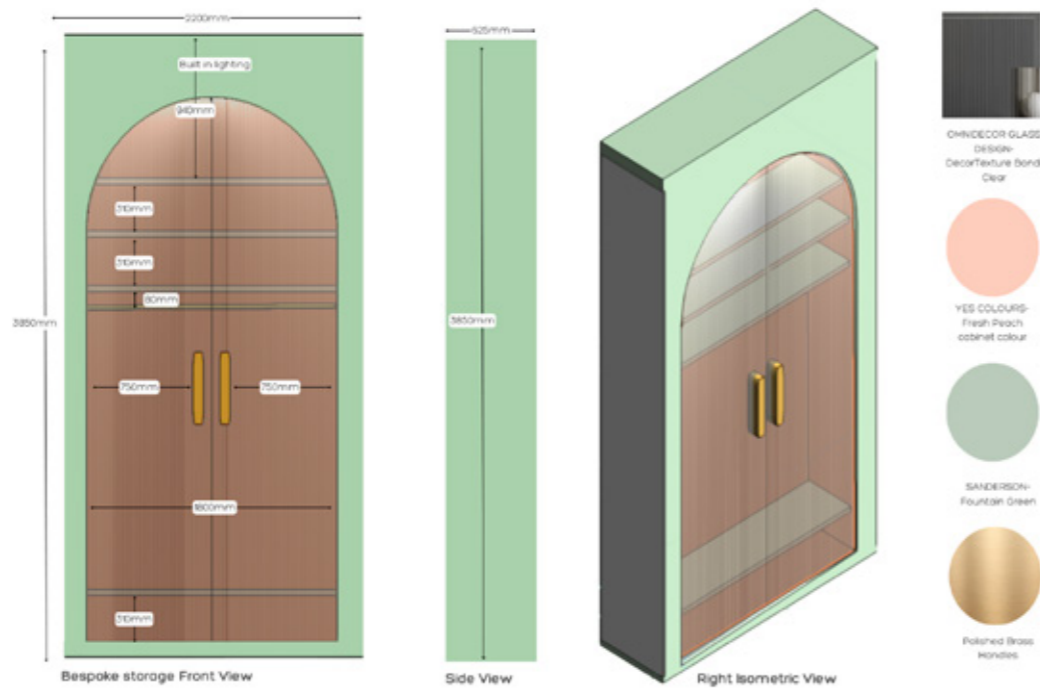
Awards:
CIUK Next Generation
Exceptional Student
Award Winner 2025




Render using Vectorworks and Photoshop



Render using Vectorworks and Photoshop



Technical details of bespoke storage unit



Commercial Interiors UK awards ceremony